

Web

Mountain Technologies

RUC Remote Universal Controller

Features

- Run UPstart or other setup software over a LAN or the Internet for remote configuration and trouble-shooting
- Set up schedules for UPB, Zwave, Insteon, X10 and ESI
- Trigger events—send UPB, Zwave, Insteon, X10 or ESI commands or email based on receipt of specific UPB, Zwave, X10 or ESI commands
- Synchronizes with online time servers for increased clock accuracy
- Tested and compliant with FCC Part 15

Benefits

- Save truck rolls, gas and time
- Trouble-shoot remotely
- Change or add scenes remotely
- Originate emails to alert owner or installer of exceptional conditions
- Turn any UPB, Zwave, X10 or ESI device into a count-down (delay) timer for bathroom fans, closet lights etc.
- Set up multi-protocol scenes

Applications

- Integrate motorized drapes or shades with your UPB, Zwave or X10 system
- Use the RUC as an Ethernet PIM with large scale home automation systems
- Email alerts
- Support motion detectors, occupancy sensors etc.
- Garage door sensing and remote closure
- Outdoor and landscape lighting control
- Use an iPhone, iTouch, iPad, Android, Blackberry, Chumby, Sony Dash, or other mobile device to control your home



The **RUC-01 Remote Universal Controller** is the most advanced remote setup, management and trouble-shooting appliance on the market today. Mix and match UPB, Zwave, Insteon, X10 and ESI drapery controllers for the ultimate in control. Control your home from anywhere in the world, using your smart phone or any other browser device. Use inexpensive

touch screens in your home to manage any UPB, Zwave, Insteon, X10 or ESI components.

The RUC-01 enables you to run UPStart from your desktop so you can manage, setup, change and trouble-shoot the UPB network at your customer's home.

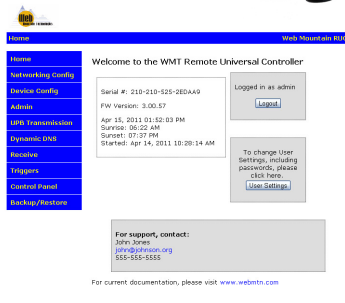
UPStart is and will always be the state of the art for the UPB universe. Any other "remote access" device will have to replicate all of UPStart's setup, management, trouble-shooting and diagnostic capabilities.

Every time a new UPB product hits the market, new features are added to an existing product or new diagnostic capabilities (like the recent device-to-device communication test) are invented, any competing remote access server will have to be updated accordingly. Not so with the RUC-01. Just run the latest version of UPStart on your local PC and you will be able to apply new UPStart features to any customer site that has a RUC-01 installed.

The RUC-01 maintains the current date, it automatically adjusts for daylight savings time and leap year, it can control events based on local sunset and sunrise and it utilizes flash memory to insure the correct operation of all functions after power outages.

The RUC-01 can also be used as an email originator. Set up various triggering links that will cause the RUC-01 to send an email to you (or your customer) to inform you of problems or issues that need to be addressed.

All programming is done from user friendly, web based screens. Various networking options are provided including DHCP or fixed IP addressing, access using DYNDNS type of services, and remote access using port forwarding.



Specifications	
Model Name	Remote Universal Controller
Model Number	RUC-01
Packaging	Standalone unit with wall-wart power supply
Input /Output Ports	2 DB9 serial, 1 Ethernet, 1 USB (future)
Dimensions	Approximately 5 X 3.7 X 1.6 in
Net Weight	16 oz.
Color	Black
Protocol	UPB, Zwave, Insteon, X10, ESI (requires a separate external interface unit for each protocol)
Addressing	250 network codes; 250 individual device codes
Wall wart Input / Output Voltage	120V AC +/-10%, 60 Hz / +5VDC
Certifications	FCC part 15, Class B
Operating Temperature	0° to +50° C, 30° to 120° F
Warranty	1 year

Web Mountain Technologies, LLC
13882 E. Grand Ave., Aurora, CO 80015
info@webmnt.com www.webmnt.com

Sales Ph: 720-207-9174
Office Ph: 303-627-1856
Fax: 303-627-7665