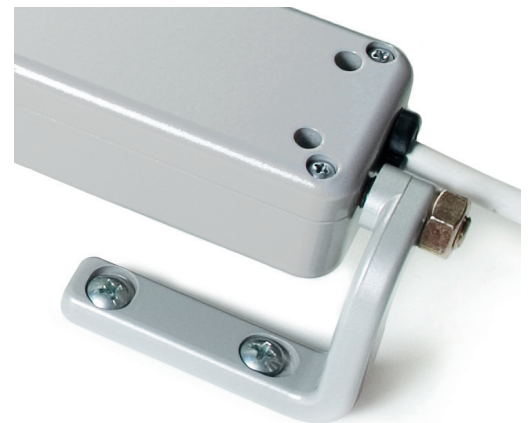


## Features

- Vega actuators are for awning windows, hoppers, curtain wall vents and skylights.
- Vega RF includes an RF (Radio Frequency) remote control
- Vega RF Rain has wiring to accept a rain detector (sold separately)
- 12" (300mm) chain operator; self-adjusting for proper closure at installation.
- Operator has stainless steel, double-link chain for rigidity and durability.
- Examples of 55 lbs operating force: 48" tall/440 lb. vent, 82" tall/752 lb. vent, or a 110 lb. skylight.
- Low-profile, attractive aluminum case; available in Black, White or Grey paint.
- Minimum sash height is 10".
- Two-year UCS manufacturer's warranty. Requires reading AFI Install Guide before purchase, and confirmation of project and installation specs by licensed electrical contractor.



Mounting brackets available separately

## Vega AC RF Rain

Part #	Color	Stroke (and force)
<b>41895CUL</b>	Grey RAL 9006	Up to 300mm (250N)
<b>41896DUL</b>	Black RAL 9005	Up to 300mm (250N)
<b>41897EUL</b>	White RAL 9010	Up to 300mm (250N)



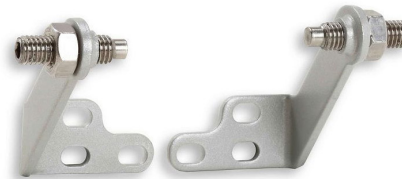
RF Remote (included)



Optional Rain Sensor

## Mounting Brackets (Ordered separately)

Part #	Style	Color
<b>41898F</b>	Long Slim	Grey
<b>41899G</b>		Black
<b>41900H</b>		White
<b>41901I</b>	Short Slim	Grey
<b>41902J</b>		Black
<b>41903K</b>		White
<b>40843F</b>	Die-cast	Grey
<b>40844G</b>		Black
<b>40845H</b>		White



Mounting brackets ordered separately  
Long Slim model, fits most profiles.

## Specifications

<b>Supply voltage</b>	100V AC - 240V AC, 60Hz Line Voltage
<b>Nom. Current draw</b>	0.15-0.3A average
<b>Limit stop</b>	(Open): Built in limit switch (Closed) Integrated electronic power cut-off
<b>Chain stroke (approx)</b>	300mm (12")
<b>Push force (Max)</b>	250N (55 lbf +/- 3%)
<b>Pull force (Max)</b>	250N (55 lbf +/- 3%)
<b>Chain speed</b>	9mm/sec
<b>Dimensions</b>	494 x 45 x 32mm (19 <sup>7</sup> / <sub>16</sub> " x 1 <sup>3</sup> / <sub>4</sub> " x 1 <sup>1</sup> / <sub>4</sub> ")
<b>Power cable</b>	UL cable 1.5 meter included, white color
<b>Run/Rest cycle</b>	For every 60 sec running (on), must then rest (off) for 120 sec
<b>Ambient Oper Temp</b>	-10 °C to +60 °C (14 °F to 140 °F)
<b>Listing</b>	UL Listed
<b>Protection class</b>	IP20
<b>Typical switch</b>	Momentary contact
<b>Colors</b>	Powder-coated: Grey (RAL 9006), White (RAL 9010), or Black (RAL 9005)
<b>Opening mechanism</b>	Stainless steel chain, chain is centered in case
<b>Remote Controller</b>	30' range, radio frequency (450Mhz)

