

## Quick Setup Guide

Speco Technologies NSL Series NVRs

Please go to [www.specotech.com/software-updates.html](http://www.specotech.com/software-updates.html) for the latest software

**Congratulations** on purchasing your new NSL NVR. We hope that this Quick Setup Guide will help you quickly setup and configure your new Speco Technologies DVR.

Thank you!

### Product Components

NVR Unit (NSL Series)



Remote Control



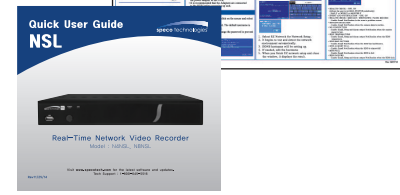
Remote Battery 1.5V (AAA x 2EA)



Quick Setup Guide



Quick User Guide



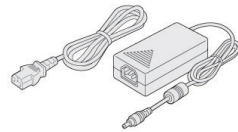
Mouse for N4NSL, N8NSL



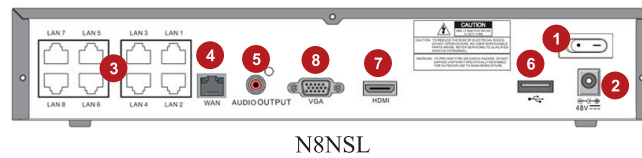
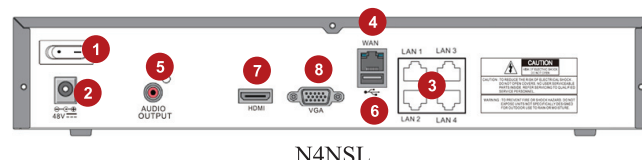
Software & Manual CD



Adaptors  
Power cables (110V or 220V)  
N4NSL 48V 1.2A  
N8NSL 48V 2.0A



### Internal Connections



[Figure 3.2.1. Connectors for NSL]

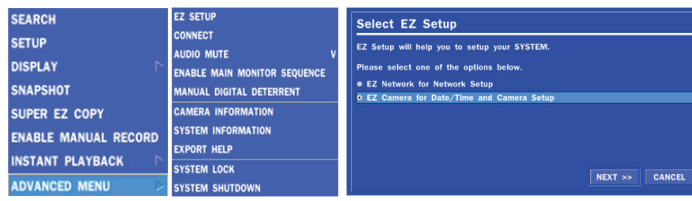
1. Power Switch: Use for power on/off.
2. POWER: DC48V input.
3. PoE PORT: N4NSL (4 Port PoE), N8NSL (8 Port PoE)
4. WAN PORT: Network Port for Internet
5. AUDIO OUTPUT: 1 Connector for Audio Output
6. USB PORT: Connector for USB Mouse or USB flash memory.
7. HDMI OUT: HDMI output port Connector to the HDMI Monitor (1280x720, and 1920x1080).
8. VGA OUT: Connector for VGA Monitor Main Video Output.

### Power on the NVR

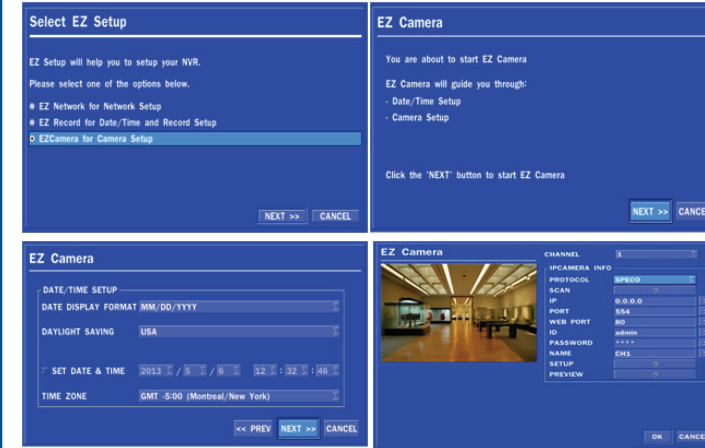
- Please follow the proper power on procedures to avoid damaging the NVR.
- Connect all necessary components, e.g. monitor and cameras, before powering the NVR.
- Check the type of power source before connecting the power adaptor to the NVR.
- It is recommended that the Adapters are connected to the NVR before powering up unit.

### EZ SETUP

- To start the EZ Setup, right click on the mouse and select ADVANCED MENU
- Enter username and password. The default username is admin and password is 1111.
- It is strongly suggested to change the password to prevent unauthorized access.

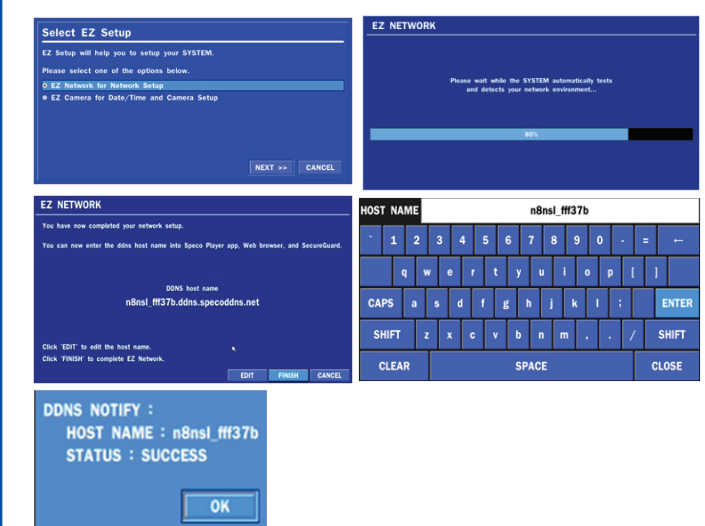


### EZ CAMERA



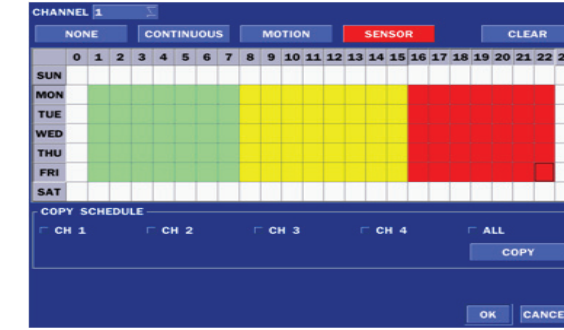
1. Select EZ CAMERA for CAMEAR SETUP, Click NEXT to proceed.
  2. Configure individual cameras in the EZ Camera Setup.
- Select the Channel to configure.
  - Select the Camera Protocol and then click on the scan button; this will scan the network using the specified protocol.
  - Select the desired Camera from the list, and then click on register.
  - If necessary, click on Preview to Preview the camera, or Setup change to camera settings.

### EZ NETWORK



1. Select EZ Network for Network Setup.
2. It begins to test and detect the network environment automatically.
3. DDNS hostname will be setting up.
4. If needed, edit the hostname
5. When you finish EZ network setup and close the window, it displays the result.

### Schedule Recording Setup



To setup a recording schedule, select SCHEDULE in the RECORD menu. Navigate through the items using the mouse or the remote control. Select CHANNEL > select NONE, CONTINUOUS, SENSOR or MOTION > highlight area. To copy a schedule to a different channel, select the channel from the COPY SCHEDULE menu & click COPY.

### Event Notification Setup

- In the SETUP menu, select the SYSTEM tab and click on System Event Notification.
- Set the sensor, motion, and video loss for triggering alarm relay output.
- HDD Error and Video Loss can also trigger beeping.



- HEALTH CHECK – OFF, ON (Allows the user to set MAIL STATUS periodically)
- DAILY or WEEKLY or MONTHLY
- EVENT AND NOTIFICATION – OFF, ON
- HEALTH CHECK / RESTART / SHUTDOWN / PANIC RECORD
  - Enable Email Notification in the event a problem occurs.
- MOTION DETECTION
  - Enable Email Notification when the camera detects motion.
- NO CONNECTION
  - Enable Email, Beep and Alarm output Notification when the camera signal is lost.
- HDD TEMPERATURE
  - Enable Email, Beep and Alarm output Notification when the HDD temperature.
- HDD BAD SECTORS
  - Enable Email Notification when the HDD has bad Sectors.
- HDD ALMOST FULL
  - Enable Email Notification when the HDD is almost full
- HDD FULL
  - Enable Email Notification when the HDD is full
- HDD FAILURE
  - Enable Email, Beep and Alarm output Notification when the HDD fails

speco technologies

Rev. 02/07/13

## Quick Setup Guide

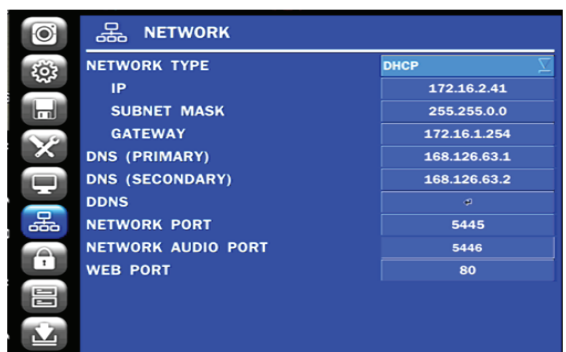
Speco Technologies NSL0 Series NVRs

### IP Camera Setup



- Select the IP Camera tab.
- CHANNEL: Enable/Disable On-Screen Display
- PROTOCOL: Select the protocol (SPECO or ONVIF).
- SCAN: Will Automatically search the IP Camera
- IP: Setup IP Camera address
- PORT: Setup a Camera Port (Default: 554)
- WEB PORT: Setup Web Port (Default: 80)
- ID: Setup IP Camera Connect ID
- PASSWORD: Set up IP Camera Connect Password
- SETUP: IP Camera Video Setup (Resolution, Frame rate and Bitrate)
- Select the ADD menu and enter site information. Click ADD to save the site information.
- Select the saved site from “Devices” for network connection.
- Select a channel and select Live view or Playback.
- Click START button

### Network Setup



- Select the NETWORK tab.
- For DHCP, set the Network Type for DHCP and exit from the menu. The IP address, Subnet Mask, Gateway and DNS settings are retrieved from network servers. DHCP is dynamic and the settings will change from time to time.
- For Static, set the Network Type for Static. Enter the IP address, Subnet Mask, Gateway and DNS. Obtain this information from the network service provider.
- The Client Access must be ON for the DVR to be accessed remotely.
- Enable/disable DDNS for free DDNS name server.

### Connect the DVR via Web-Browser Viewer

#### Setup Requirements

- Make sure PC is connected to the Internet.
  - Make sure DVR is already setup following the Network Setup steps.
- #### Internet Settings
- Start Internet Explorer; go to ‘Tools’ → ‘Internet Options’ → ‘Security’ tab.
  - Select ‘Trusted sites’ and click ‘Sites’ to specify its security setting.
  - Uncheck ‘Require server verification (https:) for all sites in this zone’. Enter the IP address of the DVR in this field and click ‘Add’ to add this website to the zone.
  - In the Security Level area, click ‘Custom Level’. Under ‘ActiveX controls and plug-ins’, set all items to ‘Enable’ or ‘Prompt’.
  - Click ‘OK’ to accept the settings and close the ‘Security Settings’ screen.

#### Obtain Network Information of the DVR



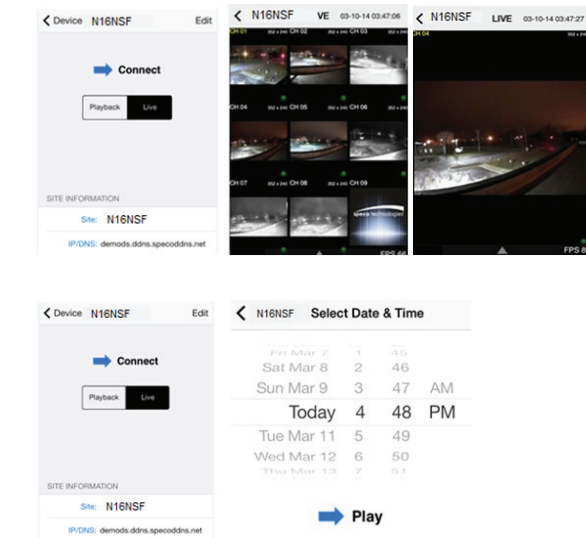
- Obtain IP address from System Information in the Sub Menu.
- In the SETUP menu, select the SYSTEM tab and enable CLIENT ACCESS.
- In the SETUP menu, select the NETWORK tab and click on NETWORK PORT. Obtain the network and web port number.
- Start Internet Explorer and enter the IP address and port of the DVR.
  - For example: http://[ip address] : [port] → http://192.168.80.6:80
- The ActiveX controls and plug-ins dialog will be prompted for installation.
- Install the plug-ins.
- Click on ‘Connect’ and enter the username and password of the DVR.
  - The default usernames and passwords are **admin / 1111** and **user1 / 1111**.

### Mobile View Software

The DVR provides mobile surveillance software for the iPhone® and the Android™.

#### iPhone®

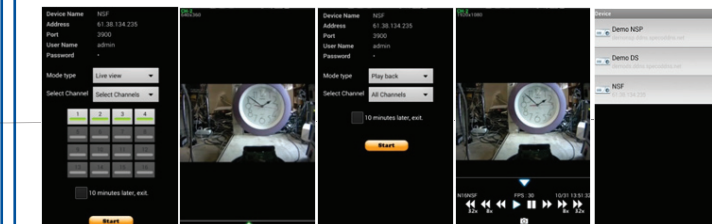
- Search for ‘Speco Player’ in the Apple App Store and install the app.



- Search for ‘Speco Player’ in the Apple App Store and install the app.
- Select the ADD menu and enter site information. Click ADD to save the site information.
- Select the saved site from “Devices”.
- Select a channel(s) to view.
- Select Playback/Live then click CONNECT.

#### Android™

- Search for ‘Speco Player’ in the Android Market and install the app.



- Select the ADD menu and enter site information. Click ADD to save the site information.
- Select the saved site from “Devices” for network connection.
- Select a channel and select Live view or Playback.
- Click START button.

### Connect the DVR via SpecoTech Multi-Client Viewer Software



SpecoTech Multi-Client Viewer Software is a multiple site monitoring client software that allows streaming of video and audio, and transmission of alarm signals from the DVRs over the network. The SpecoTech Multi-Client can display up to 16 DVRs and supports dual monitors. PTZ camera control is also supported by this software.

By attaching a microphone and speaker system to devices on site, the user may make bi-directional audio communication over the network.

Refer to the complete manual for more information.

**The SpecoTech Multi-Client Viewer Software and manual are included on the CD.**

speco technologies

200 New Highway  
Amityville, NY 11701  
1-800-645-5516  
[www.specotech.com](http://www.specotech.com)

Speco Technologies is constantly developing and improving products. We reserve the right to modify product design and specifications without notice and without incurring any obligation. Rev. 12.26.12

A

B