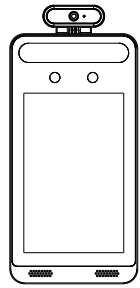


Temperature Reading Panel with Face and Mask Recognition

O2TML



Quick Installation Guide

This device is not intended for use in the diagnosis of any disease or other conditions or in the cure, mitigation, treatment, or prevention of any disease.

Warning
This camera should be installed by qualified personnel only. All the examination and repair work should be done by qualified personnel. Any unauthorized changes or modifications could void the warranty.

Statement
This guide is for reference only. Product, manuals and specifications may be modified without prior notice. Speco Technologies reserves the right to modify this without notice and without incurring any obligation. Speco Technologies is not liable for any loss caused by improper operation.

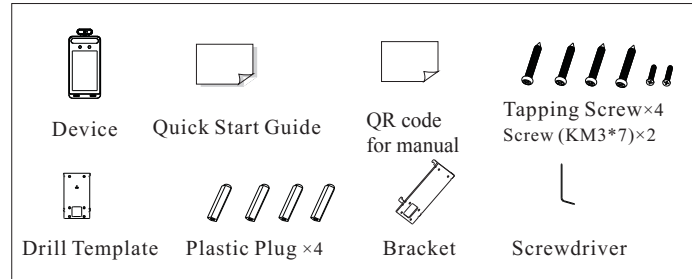
Regulatory Information
FCC conditions: This device complies with part 15 of the FCC Rules. Operation is subject to the following two conditions: This device may not cause harmful interference. This device must accept any interference received, including interference that may cause undesired operation. FCC compliance: This equipment has been tested and found to comply with the limits for a digital device, pursuant to part 15 of the FCC Rules. These limits are designed to provide reasonable protection against harmful interference. This equipment generates uses and can radiate radio frequency energy and, if not installed and used in accordance with the instruction manual, may cause harmful interference to radio communication. However, there is no guarantee that interference will not occur in a particular installation. If this equipment does cause harmful interference to radio or television reception, which can be determined by turning the equipment off and on, the user is encouraged to try to correct the interference by one or more of the following measures:

- Reorient or relocate the receiving antenna.
- Increase the separation between the equipment and receiver.
- Connect the equipment into an outlet on a circuit different from that to which the receiver is connected.

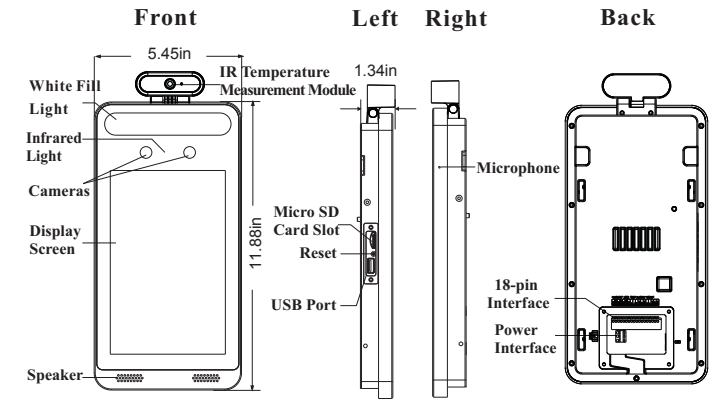
Note:
Before installation, check the package and make sure that all components are included. Contact your rep or Speco customer service department immediately if something is broken or missing in the package.

Do not drop the camera or subject it to physical shock.
Keep away from liquid while in use.
Do not touch the screen with sharp objects.
If cleaning is necessary, please use clean cloth to wipe it gently, avoiding water or alcohol.

1 Package



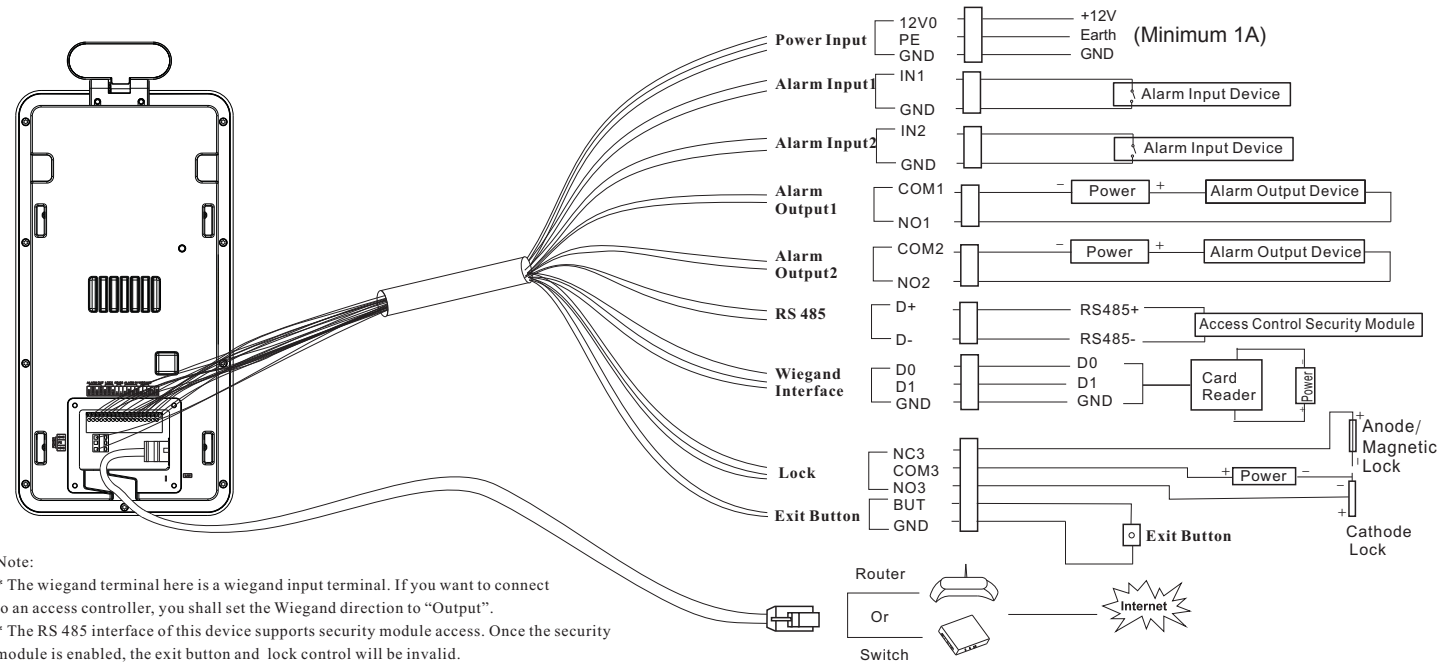
2 Overview



3 Cable Connection

18-pin Interface

1	2	3	4	5	6	7	8	9	10	11	12	13	14	15	16	17	18
NO2	COM2	NO1	COM1	NO3	COM3	NC3	D+	D-	IN1	GND	IN2	GND	D0	D1	GND	BUT	GND
2CH alarm output				Lock interface			RS 485		2CH alarm input			Wiegand interface			Exit Button Connector		



Note:
* The wiegand terminal here is a wiegand input terminal. If you want to connect to an access controller, you shall set the Wiegand direction to "Output".
* The RS 485 interface of this device supports security module access. Once the security module is enabled, the exit button and lock control will be invalid.

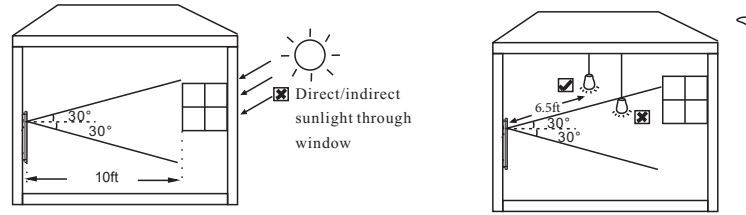
4 Installation

Ambient Illumination Requirement

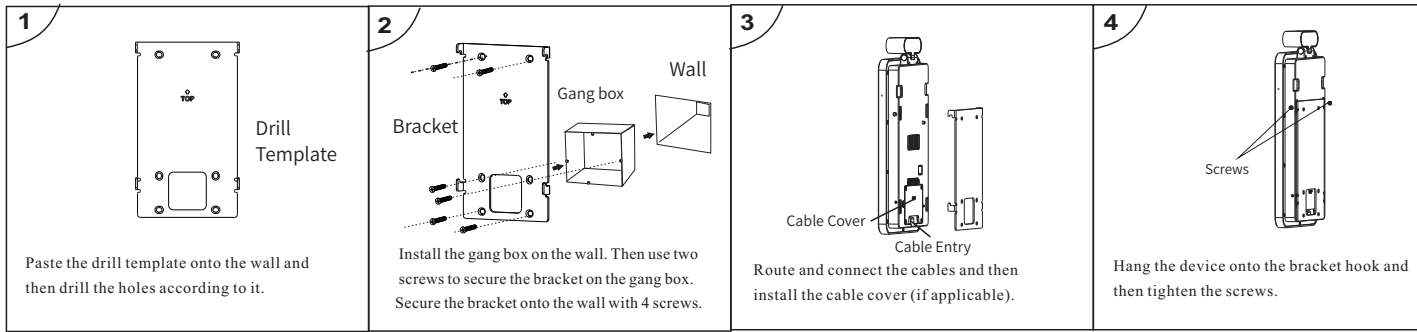
Make sure faces can be captured clearly.

Avoid direct sunlight and backlight.

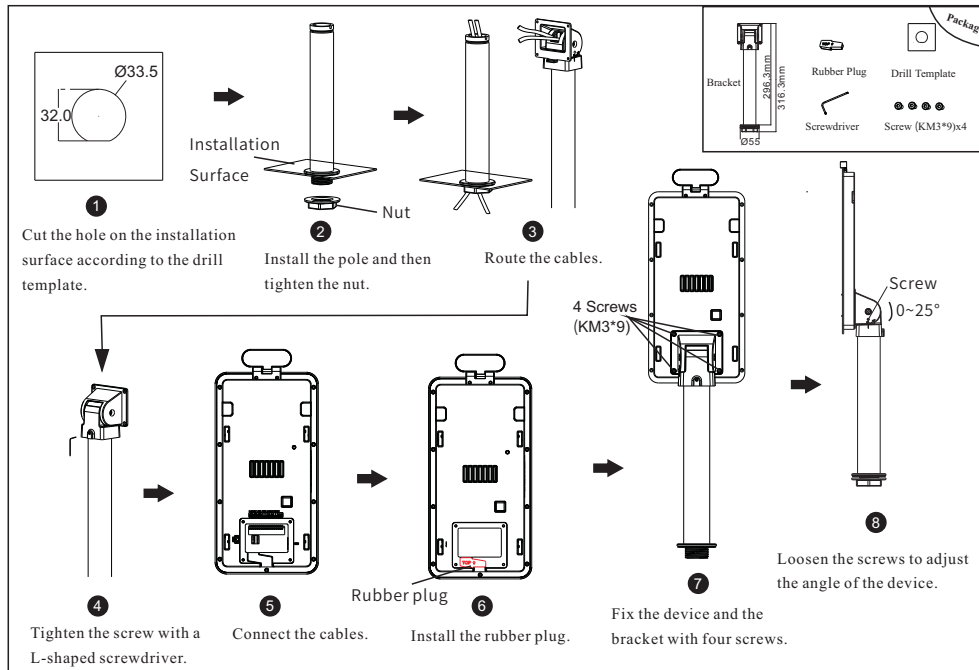
The device should be at least 6.5ft away from the light, and at least 10ft away from the window or door.



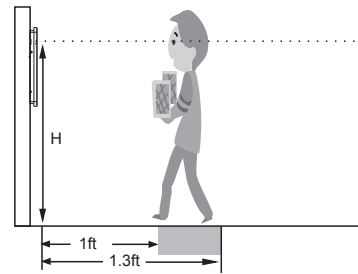
Installation



Pole Mounting Note: Pole mounting bracket is not supplied with the device by default.



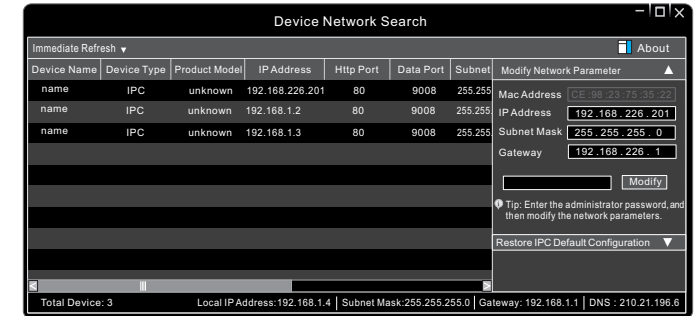
Height Requirement



- The recommended installation height (H) is from 4.25ft to 4.75ft which can cover human height of 4.6ft ~ 6.3ft in the detection area. It can be adjusted according to the actual scene.
- The best temperature measuring distance ranges from 1ft to 1.3ft.
- The best face recognition distance ranges from 1.6ft to 3.2ft.

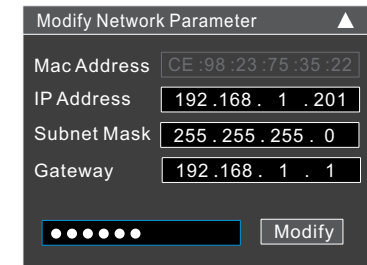
5 Network Connection

- ① Make sure that the device and the PC are well connected via LAN.
- ② Find the Speco Blue Scanner from the website URL and then install it in the computer. After that, run the scanner as shown below.



- ③ The device is defaulted to obtain its IP address automatically from the DHCP server. Click the information of the camera listed in the above table to show the network information on the right hand.

If desired, you can modify the IP address and gateway of the camera and make sure its network address is in the same local network segment as that of the computer.



After modification, please enter the password of the administrator and click “Modify” button to modify the settings.

- ⚠ The default password of the administrator is “1234”.
- ④ Double-click the camera listed in the scanner or manually enter the IP address in the address bar of the web browser to connect to the device. Then follow directions to download and install the plugin.
- ⑤ Enter the username and password in the login interface.
- ⚠ The default username is **admin**; the default password is **1234**.