

Wall Mount Transmitter

Model TB-318

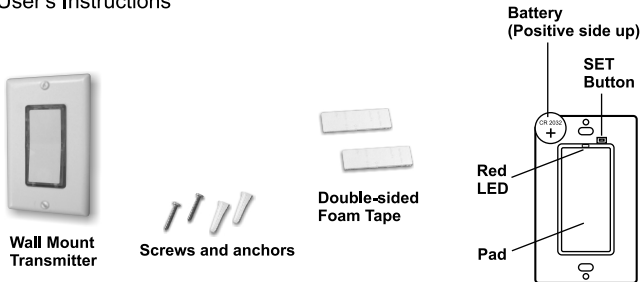
1. INTRODUCTION

Thank you for your purchase of a SkylinkHome™ Wall Mount Transmitter, Model TB-318. This transmitter allows you to wirelessly operate lighting / home automation with the SkylinkHome™ receiver modules.

All wireless signal communications within the SkylinkHome™ System are based on rolling code technology to ensure highest security is used.

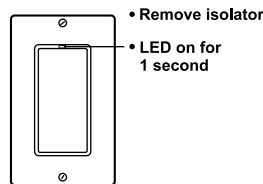
You will find the following in this package:

- Wall Mount Transmitter
- Mounting Accessories & Double-sided Foam Tape
- Lithium Battery CR-2032 (Installed)
- User's Instructions



2. POWER UP

To power the transmitter, simply remove the battery isolator from the transmitter, red LED will flash once. Press the pad on the transmitter, the red LED should flash. The transmitter is now powered properly. If the red LED does not flash when the pad is pressed, refer to Section 8 "Battery" of this manual.

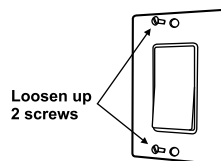


3. PROGRAMMING TRANSMITTER TO RECEIVER MODULE

In order to operate a receiver module remotely, a transmitter must be programmed to the receiver module.

To program a Wall Mount Transmitter to the receiver module, a "Learn" code must be transmitted, follow the instructions below to transmit the "Learn" code to the receiver.

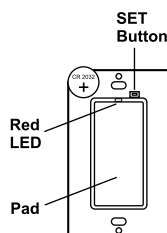
1. Remove the front wall plate of the Wall Mount Transmitter by loosening the 2 screws.



2. Put the receiver module that you plan to program into programming mode. Refer to the User's Instructions of that receiver module.

3. Press the SET button on the transmitter. Its red LED will stay on for 15 seconds. Press the pad on the Wall Mount Transmitter when the LED is steadily on to transmit the "Learn" code.

4. Once the remote is programmed, the receiver modules will quit from programming mode and the programmed transmitter is ready to be used now.



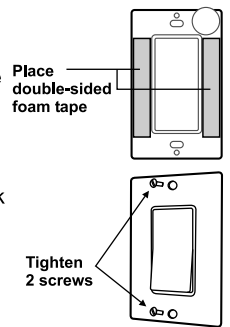
Learn Code

Follow step 3 above to transmit the "Learn" code when programming the Wall Mount Transmitter to receiver modules.

4. INSTALLATION

After programming, you are now ready to install the Wall Mount Transmitter.

You may use double sided foam tape to stick the transmitter on the wall, or you may use screws to mount the transmitter.

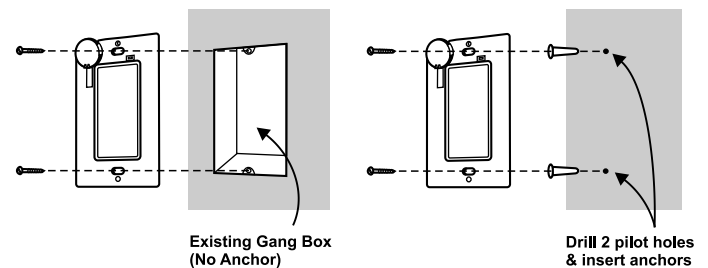


Using double sided foam tape:

Place the 2 double sided foam tapes on the back of the back plate. Clean the surface of the wall where you plan to install the back plate. Peel off the foam tape cover and stick it to the wall surface.

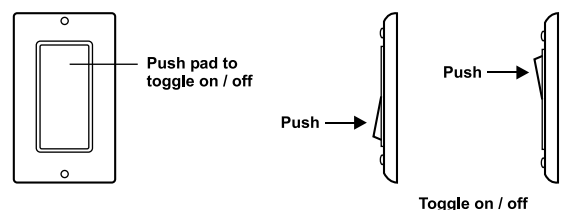
Using screws:

If you are using screws, tighten the back plate of the wall mount transmitter by the 2 screws provided. If you are installing the back plate to an existing wall switch with wall box, no need to use the anchors. Otherwise, drill 2 small pilot holes based on the 2 mounting screw positions and insert the anchors before tightening the back plate with screws. After securing the back plate, either by double sided foam tape or screws, tighten the 2 screws on the front to secure the front plate.



5. ON / OFF OPERATION

Pushing the pad from one position to the other will toggle the status of a load, i.e. when the light is off, pushing the pad will turn on the light, and vice versa.



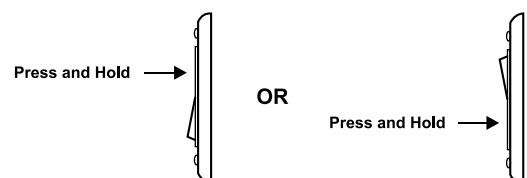
6. BRIGHTNESS CONTROL OPERATION

Besides turning on and off a load, you may also control the brightness of a light if the receiver module and the light bulb is dimmable, i.e. either incandescent light or dimmable compact fluorescent light.

To change the brightness, first turn on the light by pushing the pad.

Then, press and hold the pad after the light is on will change the brightness of the light. When the desired brightness is reached, release the pad.

Press and hold the pad again to change the brightness in the opposite way. When the desired brightness is reached, release the pad.



Brightness Control

7. ERASING WALL MOUNT TRANSMITTER FROM RECEIVERS

Type A) Self Erase - Model PL-318, PR-318, PA-318, LS-318, WR-001

Self Erase means there is a erase button on the receiver, by pressing this erase button, all transmitters can be erased.

To erase transmitters from these receivers, simply follow the instructions of these receivers. The erase procedure does not involve the transmitter.

Type B) Erase by Remote - Model LX-318, MD-318, MR-318, WE-001

Erase by Remote means there is no erase button on the receiver, so a programmed transmitter is needed in order to erase the memory of the receiver. You need to transmit a "Erase" code from the Wall Mount Transmitter. Follow the instructions below to erase the remote from the receiver.

1. Remove the front wall plate of the Wall Mount Transmitter by loosening the 2 screws.
2. Press the SET button on the Wall Mount Transmitter.
3. Press and hold the side of the pad that is already depressed on the Wall Mount Transmitter for at least 2 seconds when the LED is steadily on to transmit the "Erase" code. Do not release the pad until step 5.
4. Put the receiver that you want to erase the transmitter from into programming mode. Refer to the User's Instructions of that receiver.
5. Once the receiver receives this "Erase" code, the receiver will indicate it has erased all transmitters, and you may now release the pad on the Wall Mount Transmitter.

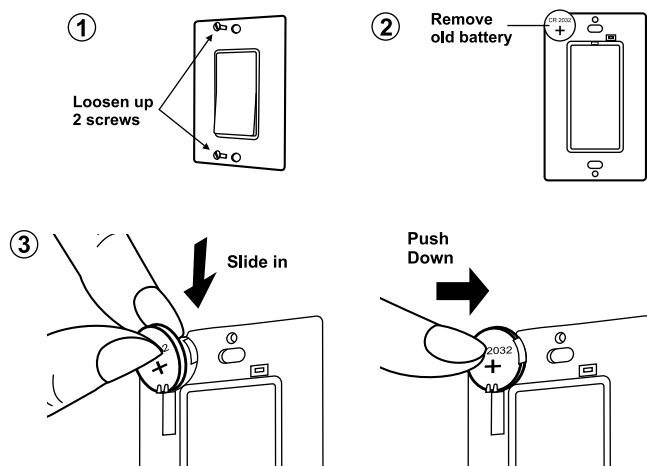
Erase Code

Follow steps 2 and 3 above to transmit the "Erase" code when erasing the Wall Mount Transmitter from Type B receivers.

8. BATTERY

When the operating range is reduced, or when the red LED does not flash during operation, it is time to replace the battery. Follow the procedure below to replace the battery.

Note: Dispose of old batteries promptly and properly.



CUSTOMER SERVICE

17 Sheard Avenue, Brampton, Ontario, Canada L6Y 1J3
Email: support@skylinkhome.com
http://www.skylinkhome.com
P/N. 101Z873
Patent Pending
©2010 SKYLINK GROUP

9. FCC

The Remote Control is approved by the FCC and it complies with Part 15 of the FCC Rules. Its operation is subject to the following two conditions :

1. This device may not cause harmful interference.
2. This device must accept any interference that may cause undesired operation.

WARNING:

Changes or modifications to this unit not expressly approved by the party responsible of compliance could void the user's authority to operate the equipment.

10. WARRANTY

If, within one year from date of purchase, this product should become defective (except battery), due to faulty workmanship or materials, it will be repaired or replaced, without charge. Proof of purchase and a Return Authorization are required.

11. CUSTOMER SERVICE

If you would like to

- find out the up-to-date specifications
- know more about features and applications
- download documents, i.e. user's instructions
- order Skylink products

or if you have difficulty getting products to work, please:

1. visit our FAQ section at www.skylinkhome.com, or
 2. email us at support@skylinkhome.com, or
 3. call our toll free at 1-800-304-1187 from Monday to Friday, 9 am to 5 pm EST.
- Fax (800) 286-1320

12. ACCESSORIES

The SkylinkHome™ System consists of many other devices such as SkylinkHome™ Remotes, Motion Sensor, ON/OFF Wall Switch, Wall Dimmer, Plug-In Dimmer with or without Repeater, Plug-In ON/OFF Control (Outdoor/Indoor), Screw-In Dimmer, ON/OFF/Dimming Control, ON/OFF Control, Smart Button™ Garage Door Control, etc. Please visit Skylink website at www.skylinkhome.com for more information.