



## INSTALLATION INSTRUCTIONS

### WIRELESS 3 WAY ON/OFF/DIMMER KIT

Model: SK7



Congratulations on your purchase of the SkylinkHome™ Wireless 3 Way On/Off/Dimmer Kit, model SK7. Simply replace your existing wall switch with the Skylink Wall Switch receiver and mount the Wireless Wall Switch Transmitter anywhere you would like to control your lighting.

### Warranty

#### ONE YEAR WARRANTY

This product is guaranteed to be free of defects in materials and workmanship for 1 year from the date of purchase. If this product is defective, call 1-800-304-1187 for repair or replacement parts. Guarantee does not include normal wear and tear or batteries.



If you have any questions, problems or missing parts, please call Skylink Customer Support: 9:00am - 5:00pm EST, Monday-Friday.

1-800-304-1187

Or e-mail us at support@skylinkhome.com

www.skylinkhome.com

CUSTOMER SERVICE  
17 Sheard Avenue,  
Brampton, Ontario,  
Canada L6Y1J3

P/N : 101Y156 Rev:0  
©2014 SKYLINK GROUP.

### Safety Information

- Turn off power to the circuit breaker before installing.
- If you are uncertain or uncomfortable performing this installation, please consult a qualified electrician. This manual should also be kept for future reference.
- For indoor use only.
- DO NOT use this product to control loads over the specified maximum rating. For dimming function, the light bulbs must be dimmable.

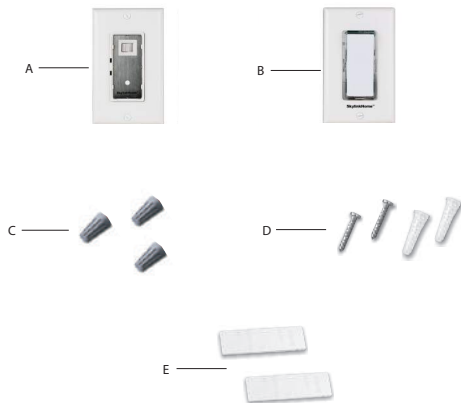
The device is approved by the FCC and it complies with Part 15 of the FCC Rules. Its operation is subject to the following two conditions:  
1. This device may not cause harmful interference.  
2. This device must accept any interference that may cause undesired operation.

**WARNING:** Changes or modifications to this unit not expressly approved by the party responsible of compliance could void the user's authority to operate the equipment.

### Technical Specifications

Input Voltage	120V AC, 60Hz
Standby Current	0.2mA
Minimum Load	10W
Maximum Load	300W at 120VAC
Operating Frequency	318MHz
Operational Temperature	-4°F - 140°F (-20°C - 60°C)
Humidity	5% - 95%
Range	Up to 500 feet in open area

### Package Contents



Part	Description	Quantity
A	Wall Switch Receiver	1
B	Wireless Wall Switch Transmitter	1
C	Wire Nuts	3
D	Screws and anchors	2
E	Double-sided Foam Tape	2

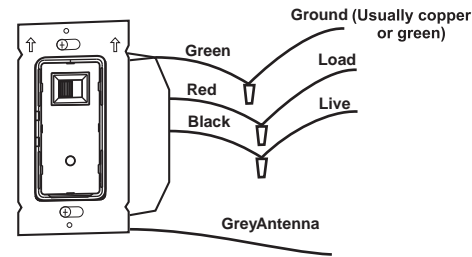
### Section 1 - Setting up the Wall Switch Receiver

**WARNING:** Turn off power to the circuit that you plan on installing the Wall Switch to, at the circuit breaker. Failure to turn off power at the circuit breaker can result in electrical shock, causing severe or fatal injury.

**NOTE:** The Wall Switch is designed to operate incandescent light or dimmable compact fluorescent light with a maximum load of 300W at 120VAC. Light bulbs must be dimmable in order to achieve dimming function.

**NOTE:** If you already have an existing 3 Way Switch, disable one switch and replace the other switch with the Wall Switch Receiver.

- Loosen the screws on the wallplate cover of the Wall Switch receiver and remove it before installing.
- Install the Wall Switch with the 3 wires, Live, Load and Ground. Use the provided wire nuts (C) to connect these wires respectively to the existing wires from the wall. Neutral wire is not required and cannot be connected to the Wall Switch Receiver.
- After all the wires are connected, ensure that all of the wire connectors are attached securely and there should be no exposed copper wiring. Secure the Wall Switch with screws.



**NOTE:** Do not cut the antenna.

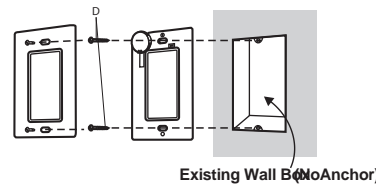
### Section 2 - Setting up (continued)

#### INSTALLING WITH SCREWS

**NOTE:** The Wall Mount transmitter comes with a lithium battery already installed. Remove the battery isolator tag from the Wall Mount Transmitter before installing.

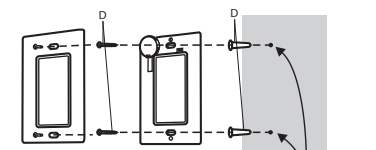
#### Installing to an Existing Wall Switch

- Loosen the screws on the wall plate cover of the Wireless Wall Switch transmitter and tighten the two included screws (D) on the back plate to the existing wall box.
- Tighten the two screws on the wallplate to the back plate to secure it.
- The Wireless Wall Switch transmitter is now ready to be controlled.



#### Installing on New Wall Surface

- Drill two small pilot holes based on the two mounting screw positions and insert the anchors (D) before tightening the back plate with screws (D).
- Tighten the two screws on the wall plate to the back plate to secure it.
- The Wireless Wall Switch transmitter is now ready to be controlled.



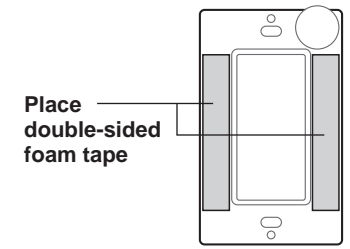
Drill 2 pilot holes & insert anchors

### Section 2 - Setting up the Wireless Wall Switch Transmitter

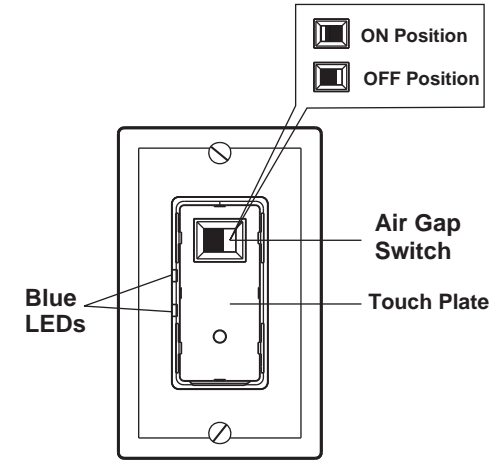
#### INSTALLING WITH DOUBLE SIDED TAPE

**NOTE:** The Wireless Wall Switch Transmitter comes with a lithium battery already installed. Remove the battery isolator tag from the Wireless Wall Switch transmitter before installing.

- First clean the wall surface where you plan to install the Wireless Wall Switch transmitter.
- Place the two foam tapes (E) on the back of the Wireless Wall Switch transmitter plate.
- Peel off the foam tape cover and stick it to the wall surface.



- Make sure the air gap switch is in the off position and then turn the circuit back on.
- Place the air gap switch to on position. The two blue LEDs will be on. If the blue LEDs remain off, please check and ensure the light bulb is installed and in good position and that the wires are connected correctly.
- After the Wall Switch is installed, tap the metal touch plate to turn the lights on and off.

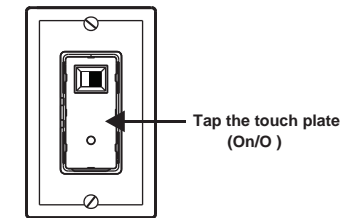


### Section 3 - Operation

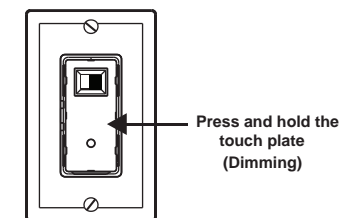
#### Wall Switch Receiver

**NOTE:** Make sure the Air Gap Switch is in the on position before you start.

- To turn the light on and off, tap the Wall Switch metal touch plate..

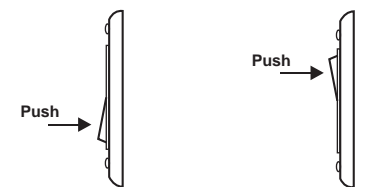


- To dim or brighten the lights, tap the metal touch plate to turn on the lights then press and hold to dim or brighten the lights.

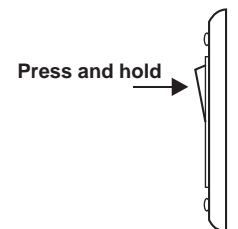


#### Wireless Wall Switch Transmitter

- To turn the light on and off, push the Wireless Wall Switch pad from one position to the other.



- To dim or brighten the lights, push the Wireless Wall Switch pad to turn on the lights then press and hold the same (upper) pad to dim or brighten the lights.

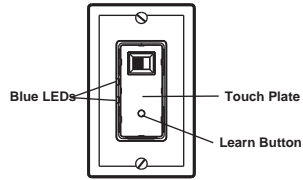


## Section 4 - Programming

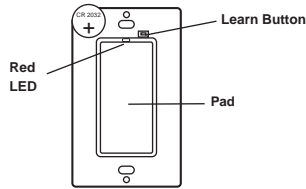
**NOTE:** Before programming, remove the wall plate on the Wireless Wall Switch transmitter by loosening the screws.

**NOTE:** Use a sharp non-conductive object, like a pen or pencil, to press the learn button.

1. Touch the metal touch plate on the Wall Switch receiver to turn the lights on. The two blue LEDs should go off.
2. Press and hold the learn button for about three seconds until the upper blue LED flashes quickly and then release the learn button.



3. Press the learn button on your Wireless Wall Switch transmitter. The red LED will be on for 15 seconds.
4. Press the pad (switch) on the Wall Switch Transmitter, the red LED will flash and then go off. The upper blue LED on the Wall Switch Receiver will also turn off.
5. Both wall switches are now programmed.



## Section 9 - Setting a Timer Duration

**NOTE:** This section is for transmitters that are programmed to Flashing Alert Mode and Countdown Timer Mode. The timer duration for both modes can be set for the following times: 1 minute, 5 minutes, 15 minutes, 30 minutes or 60 minutes.

**NOTE:** Once the number of flashes reaches 5, it will stay at this setting. If you would like to go back to other settings, such as 1 minute, release the button and repeat from step 1 to start over.

**NOTE:** Use a sharp non-conductive object, like a pen or pencil, to press the learn button.

1. The connected light must be turned off and the two blue LEDs should be on.
2. Press and hold the learn button for three seconds until the lower blue LED flashes once. The number of flashes indicates the timer duration.

Number of Flashes	Timer Duration
1	1 min.
2	5 min.
3	15 min.
4	30 min.
5	60 min.

3. Continue to hold the learn button until it reaches the desired setting. The status will change every 6 seconds; so holding the learn button for another 6 seconds the number of flashes will change from 1 to 2, 2 to 3 etc.

Once a transmitter is programmed for the timer mode, activating this programmed transmitter will turn the lights on for the specified timer duration. To stop timer countdown, press a programmed button for regular mode.

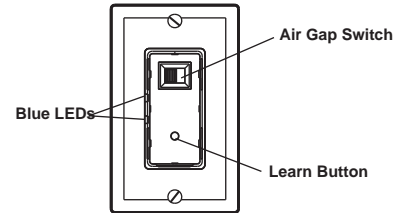
**NOTE:** During a timer countdown if the Wall Switch receiver receives another signal for timer operation, the timer will start again and override the previous timer. This will extend the on period by another timer interval.

## Section 5 - Erasing

**NOTE:** All previously programmed devices will be erased. You must re-program the devices you want to keep.

**NOTE:** Use a sharp non-conductive object, like a pen or pencil, to press the learn button.

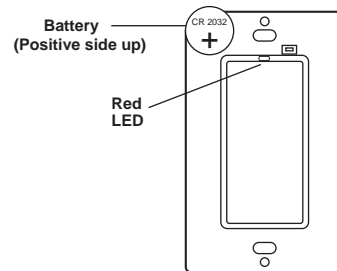
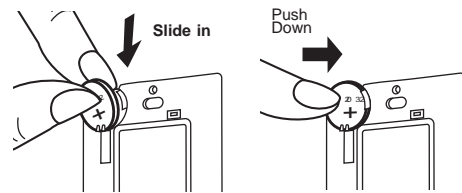
1. Power off the Wall Switch receiver by sliding the air gap switch into the off position.
2. Press and hold the learn button and slide the air gap switch back into the on position.



3. The blue LEDs will first turn on and then turn off.
4. Release the learn button.
5. All devices have now been successfully erased.

## Section 10 - Replacing the Battery

1. Remove the wall plate from the Wireless Wall Switch transmitter by loosening the two screws.
2. Remove the existing battery by sliding it out.
3. Insert the new battery, positive side up, by sliding it in and pushing down on the battery to lock it in place.
4. When the battery is installed, the red LED on the transmitter will be on for one second.



## Section 6 - Enable/Disable On/Off or Dimming

**NOTE:** On/Off Mode turns the light on/off, without dimming and Dimming Mode turns the light on/off or dims/brightens.

**WARNING:** Non-dimmable load has to always be working under the On/Off Mode. Using non-dimmable load under Dimming Mode may damage the non-dimmable CFL.

**NOTE:** The factory default operating mode is on/off.

1. Turn the light on with the programmed transmitter or touch pad.
2. Press and hold the button on the transmitter that is programmed to the Wall Switch receiver for 10 seconds or touch the pad with your finger for 10 seconds. The LED will flash quickly.
3. The light in the room will flash. If it flashes once, it is in On/Off Mode. If it flashes twice, it is in Dimming Mode.
4. Repeating step 2 will toggle the settings between On/Off Mode and Dimming Mode.

## Troubleshooting

Problem	Solution
Wall Switch Receiver's LEDs and the connected load will not turn on.	- Ensure the corresponding wires are connected correctly. Refer to Section 1. - Ensure the wires are side by side and held together when pushing them inside the wire nuts. - Check that the circuit breaker is turned on.
My switch has more than 3 wires in the wall box.	- If there are white wires (neutral) in the wall box, connect the white wire with a wire nut. Only connect the Load and Live wires from the wall box to the Wall Switch Receiver.
The Wall Switch Receiver is getting warm to touch.	- This is normal. Ensure the connected load does not exceed the maximum rating.
The range of my Wall Switch Receiver is decreasing.	- Keep the antenna wire as straight as possible and put it directly into the dry wall or via the hole in the wall box.
It takes a long time for the light to turn off when set to Timer Mode.	- Ensure the timer duration is set to the desired setting. - Check that there were no other Timer Mode signals being received as that will extend the ON period by another interval.
Can I connect the Wall Switch Receiver with 600W lights?	- No. Purchase the Skylink Wall Switch Receiver (WE-001/WE-318) instead of this Wall Switch Receiver.
Can I dim the CFL with the Wall Switch Receiver?	- Ensure the CFL is dimmable.

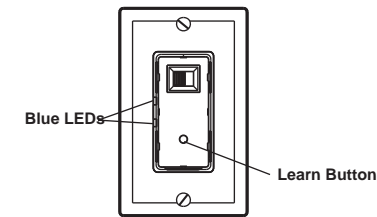
## Section 7 - Flashing Alert Mode

**NOTE:** If the Flashing Alert Mode is activated, the light connected to the Wall Switch receiver will flash for a predetermined time interval and then turn off.

**NOTE:** You must complete the programming sequence within the 15-second interval, otherwise the Wall Switch receiver will quit from programming mode and you will need to start again from step 1.

**NOTE:** Use a sharp non-conductive object, like a pen or pencil, to press the learn button.

1. To program a transmitter to operate in Flashing Alert Mode, hold the learn button on your Wall Switch receiver for about 10 seconds, until the upper blue LED flashes slowly, then release the learn button.
2. Press the learn button on your transmitter.
3. Once the transmitter is programmed, both blue LEDs will flash quickly and stop flashing.
4. The transmitter has been successfully programmed.



**NOTE:** Once you have successfully completed the programming, go to section 9 to setup the timer duration for the transmitter.

## Optional Snap-On Decorative Cover

### Snap a cover into your Skylink Wall Switch!

Place the Snap-On Cover on the opening of the Wall Switch receiver for a more stylish look. Press or tap the cover, TM-001, to turn lights on/off or dim/brighten. Or carry the Snap-On Remote, TM-318, with you for local control and when you are done snap it back onto the Wall Switch.



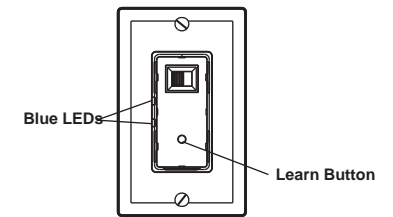
## Section 8 - Countdown Timer Mode

**NOTE:** If the Countdown Timer Mode is activated, the light connected to the Wall Switch receiver will be on for the predetermined time interval and then turn off.

**NOTE:** You must complete the programming sequence within the 15-second interval, otherwise the Wall Switch receiver will quit from programming mode and you will need to start again from step 1.

**NOTE:** Use a sharp non-conductive object, like a pen or pencil, to press the learn button.

1. To program a transmitter to operate in Countdown Timer Mode, hold the learn button on your Wall Switch receiver for about 20 seconds, until the upper blue LED is on steadily, then release the learn button.
2. Press the learn button on your transmitter.
3. Once the transmitter is programmed, both blue LEDs will flash quickly and stop flashing.
4. The transmitter has been successfully programmed.



**NOTE:** Once you have successfully completed the programming, go to section 9 to setup the timer duration for the transmitter.

## Accessories

### Add up to eight Skylink Wireless Transmitters!



Wireless Wall Switch  
Model: TB-318



Motion Sensor  
Model: ID-318



Snap-On Remote  
Model: TM-318



Keychain Remote  
Model: LK-318



LCD Deluxe Remote  
Model: TD-318



Wireless Remote Control TC-Series  
TC-Series Remotes are available in 1 to 14 buttons.