

4-Button Keychain Transmitter

Model 4B-201

1. INTRODUCTION

The 4-button keychain transmitter is designed to operate Skylink swing door opener. It can operate up to 4 swing door openers in toggle mode, or 2 swing door openers in open / close mode.

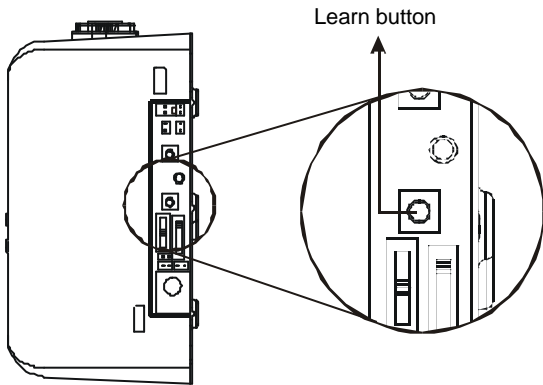
In this package, you should find a keychain transmitter with battery installed and an user's instructions.



Please follow the instructions below to program the keychain transmitter to the swing door opener.

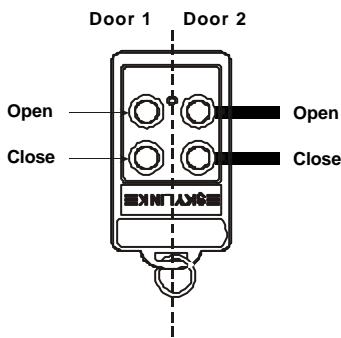
2. PROGRAM THE KEYCHAIN TRANSMITTER TO THE SWING DOOR OPENER

You can program up to 15 single button-transmitters to the swing door opener. This is ideal if you have multiple users for one door and they can carry their own remotes. To program transmitter, follow the instructions below:



1. The operator should be in standby mode, i.e. adapter plugged in but the swing door opener should not be operating, only the red LED should be on steadily.
2. Press and hold the "Learn" button, the red LED will start to flash and buzzer will beep indicating the door opener is now in learn mode.
3. Press and hold the button on the transmitter you would like to program while you are holding onto the learn button on the door opener, you should hear a long beep and the LED will be off. You may now release both the learn button on the door opener and the button on the transmitter. You have now successfully programmed the transmitter to the door opener.

If your swing door opener operates in open / close mode, you need to program the open button first, then repeat the above procedure to program the close button.



3. OPERATION

Depending on the operating modes, the keychain transmitter operates differently.

There are 3 operating modes for the swing door opener:

- Toggle
- Open / Close
- Timer

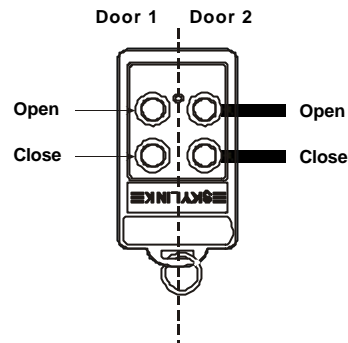
Please refer to the user's instructions of the swing door opener for more information on each operating mode.

Toggle Mode

If your swing door opener operates in toggle mode, pressing the programmed button will open / close the door.

Open / Close Mode

If your swing door opener operates in open / close mode, pressing the open button will open the door, pressing the close button will close the door.



4. ERASE TRANSMITTER FROM SWING DOOR OPENER

In order to erase any unwanted transmitter (buttons), you must first erase all of them. Then reprogram each transmitter (button) you wish to use.

To erase all transmitters:

1. Unplug the door opener when it is in standby mode.
2. Press and hold the learn button, then plug the adapter back in while holding the learn button.
3. You should see the red LED flashing and buzzer beeping rapidly. This indicates all the transmitters have been erased and you may release the learn button. You can now program the transmitter you wish to use based on the instructions "2. Program the keychain transmitter to the swing door opener".

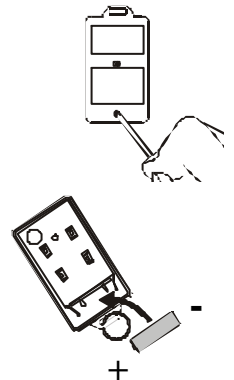
5. BATTERY

The battery of the keychain remote (Alkaline, Type 23A, 12V) needs to be replaced when either one of the followings occurs:

1. The LED on the keychain doesn't flash or on when a key is pressed; or
2. The operating range starts to decrease.

To replace the battery:

1. Undo the two screws on the back of the transmitter. The bottom case will then come off.
2. Using a small screwdriver or pen, pry out the old battery from one end.
3. Place the new battery in position. A diagram in the battery compartment indicates which end is positive and which is negative.
4. Close the battery cover and reinsert two screws.



6. OTHER SWING DOOR OPENER ACCESSORIES

The swing door opener can work with different accessories include: keychain/wallmount transmitter, motion sensor, electric strike, electromagnetic lock kit & keypad transmitter, etc. Please visit www.skylinkhome.com or contact us at support@skylinkhome.com for more information of how to fully utilize your swing door opener.

7. FCC

This device complies with Part 15 of the FCC Rules. Operation is subject to the following two conditions: (1) This device may not cause harmful interference, and (2) This device must accept any interference received, including interference that may cause undesired operation.

WARNING:

Changes or modifications to this unit not expressly approved by the party responsible for compliance could void the user's authority to operate the equipment.

NOTE:

This equipment has been tested and found to comply with the limits for a Class B digital device, pursuant to Part 15 of the FCC Rules. These limits are designed to provide reasonable protection against harmful interference in a residential installation. This equipment generates, uses and can radiate radio frequency energy and, if not installed and used in accordance with the instructions, may cause harmful interference to radio communications.

However, there is no guarantee that interference will not occur in a particular installation. If this equipment does cause harmful interference to radio or television reception, which can be determined by turning the equipment off and on, the user is encouraged to try to correct the interference by one or more of the following measures:

- Reorient or relocate the receiving antenna.
- Increase the separation between the equipment and receiver.
- Connect the equipment into an outlet on a circuit different from that to which the receiver is connected.
- Consult the dealer or an experienced radio/TV technician for help.

8. CE

Declaration of Conformity

This equipment complies with the requirements relating to electromagnetic compatibility, EN 301489-3:2002, EN300220-3:2000, EN60950-1:2001, EN50371:2002. This equipment conforms to the essential requirement of the Directive (1999/5/EC) of the European Parliament and of the Council.

9. WARRANTY

If, within one year from date of purchase, this product should become defective (except battery), due to faulty workmanship or materials, it will be repaired or replaced, without charge. Proof of purchase and a Return Authorization are required.

10. CUSTOMER SERVICE

If you would like to order Skylink's products or have difficulty getting them to work, please :

1. visit our FAQ section at www.skylinkhome.com, or
2. email us at support@skylinkhome.com, or
3. call our toll free at 1-800-304-1187 from Monday to Friday, 9 am to 5 pm EST.
Fax (800) 286-1320



CUSTOMER SERVICE

17 Sheard Avenue, Brampton, Ontario, Canada L6Y 1J3
Email: support@skylinkhome.com
<http://www.skylinkhome.com>
P/N. 101A414
©2006 SKYLINK GROUP