



Home Automation Made Simple.

## Label Kit for Pushbutton Faceplates

10 die-cut sheets suitable for Laser/Inkjet printers

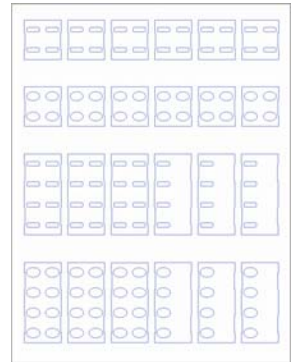
These die-cut labels are designed to be printed on a standard laser or inkjet printer allowing the installer or homeowner to custom-label each button. Since you can use any text, font or icons, the possibilities are endless! You can even print a background color or pattern to match your room decor or match the color of the switch.

To print black, brown or any other background label color use the white Label Kit, model ZLK-01-W.

Each sheet contains die-cut labels for all Simply-Automated multi-button faceplates.

Downloadable Microsoft Word and Publisher templates are available at [www.Simply-Automated.com/templates](http://www.Simply-Automated.com/templates).

ZLK-01-W  
ZLK-01-A  
ZLK-01-LA  
ZLK-01-I



### User Instructions

#### Microsoft Word 2000 or higher

- 1) Download the template file and save it to your PC.
- 2) Open the template file in Microsoft Word.
- 3) Place cursor above (or beside) button to input/edit button text.  
**NOTE:** You may need to vertically adjust the line / text position in a text box. To do so, select all the text in the box and then click on "Format > Paragraph > Spacing > Before >" to adjust text up and down by changing the line spacing value.
- 4) To modify background color or pattern, select light-gray outlined box around the label, right-click and select "Format AutoShape" (see reverse for details).
- 5) **SAVE FILE.**
- 6) **IMPORTANT! REMOVE LABEL OUTLINE** image from background before printing. Click on OUTSIDE outlines just inside page borders and click Delete.
- 7) Print **TEST PAGE** on plain paper **FIRST** and verify alignment with label die-cut. Adjust (nudge) text background boxes as necessary.

#### Microsoft Publisher 98 or higher

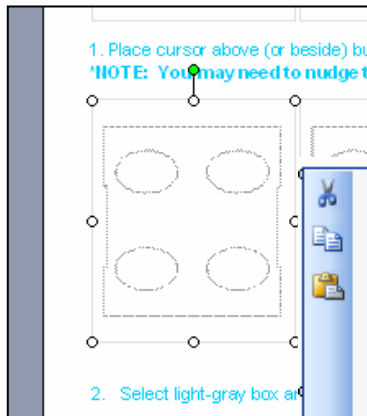
- 1) Download the template file and save it to your PC.
- 2) Open the template file in Microsoft Publisher.
- 3) Place cursor above (or beside) button to input/edit button text.  
**NOTE:** You may need to nudge text boxes to fit depending on the printer margins and the font selected.
- 4) To modify background color or pattern, place cursor in the area below each label, right-click and select "Format AutoShape" (see reverse for details).
- 4) **IMPORTANT! HIDE LABEL OUTLINE** image before printing. From the menu bar select "View" and click Ignore Master Page.
- 5) Print **TEST PAGE** on plain paper **FIRST** and verify alignment with label die-cut. Adjust (nudge) text background boxes as necessary.

See reverse for instructions on printing labels for Brown or Black multi-button faceplates.

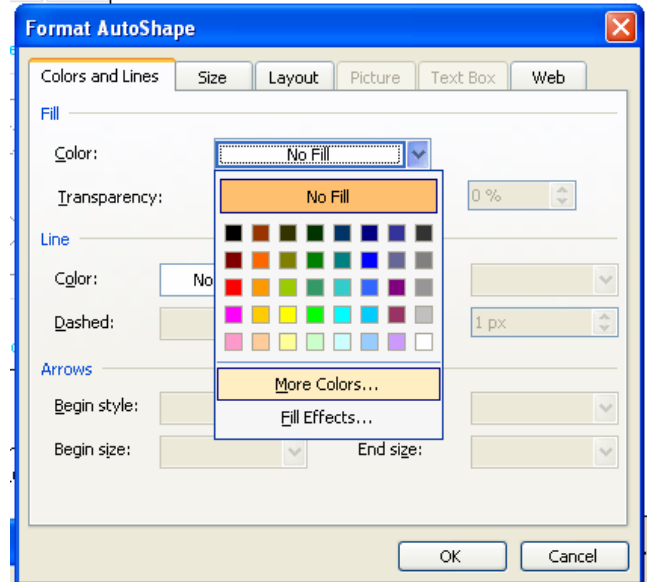
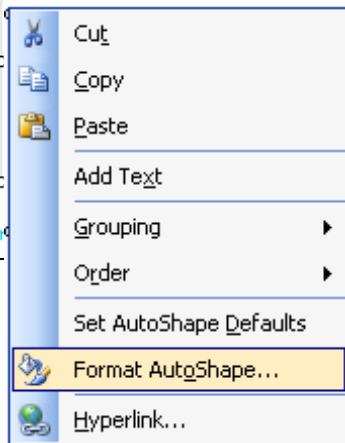


# Specifying Custom Colors for the Background using Microsoft Word or Publisher

1) Select bounding box

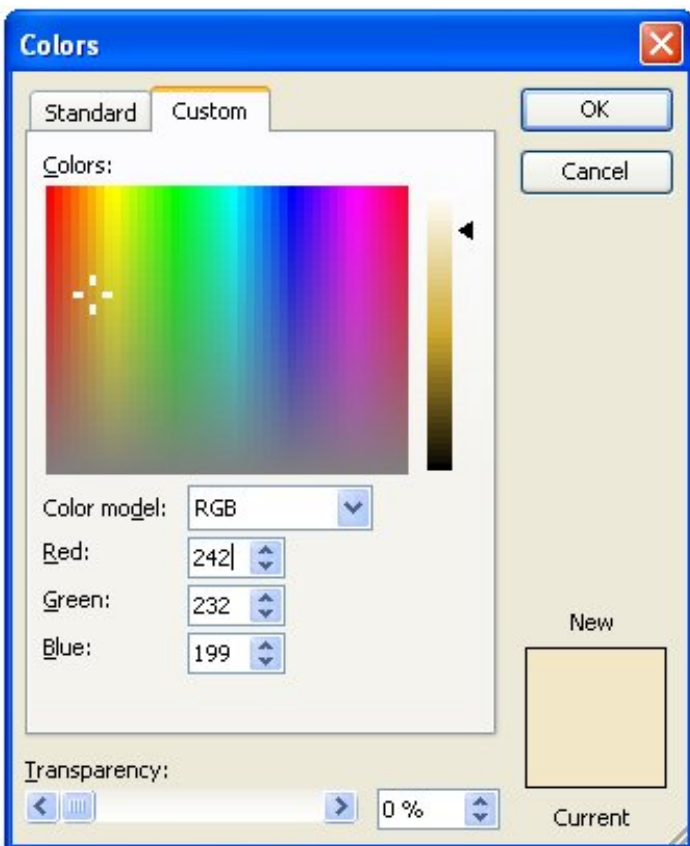


2) Right-click the bounding box and select "Format AutoShape..." to open the **Format AutoShape** menu. Select "More Colors..." from the Fill → Color: dropdown menu on the "Colors and Lines" tab.



*Format AutoShape menu*

3) From the "Custom" Tab, select RGB for the Color model and input the correct R, G, and B numbers for the color you wish to use. (See **Table 1**: RGB)



<b>Table 1:</b> RGB	Almond	Light Almond	Ivory	Brown	Black
Red	242	230	69	69	0
Green	232	222	28	28	0
Blue	199	175	28	28	0

**NOTE:** For **Black** background, select "Black" from the "Standard" color tab. And, be sure to select a text font color (e.g. white instead of black) for easy reading.

Depending on how your printer is calibrated, you can adjust any of settings above to better match the color of your faceplate.