



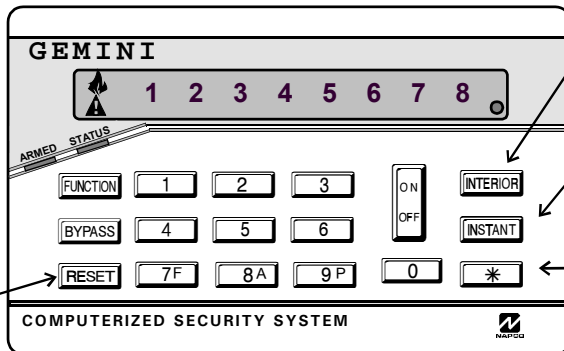
## GEM-P801 Programming Instructions

Note: These Programming Instructions are intended to be used in conjunction with WI1089. Please refer to WI1089 for additional information, instructions and definitions.

### DEALER PROGRAM MODE - KEYPAD KEY DEFINITION

#### NOTE:

After 15 minutes of keypad inactivity the keypad will emit a steady tone indicating the panel has been left in Dealer Program Mode. Enter Dealer Code to exit or press the **RESET** key to return to Dealer Program mode.



#### Set Key

Press this key before entering a Programming Block Number.

#### Scroll Key

Use this key to scroll through data that has been entered in Programming Blocks.

#### Blank Key

Press this key to disable all features within a LED type Programming Block or to blank out digits in a Direct Entry type Programming Block.

#### Hexadecimal Data Entry

To Enter a hexadecimal digit enter the following:

A =	*	1	D =	*	4
B =	*	2	E =	*	5
C =	*	3	F =	*	6

#### DEFAULTING THE PANEL

1. Remove power from the panel.
2. Remove all wiring from terminal 19 (PGM) and terminal 3.
3. Connect terminal 19 (PGM) to terminal 3.
4. Apply power to the GEM-P801 control panel.
5. After a few seconds the ARMED, READY and **▲**SYSTEM TROUBLE LEDs will flash.
6. The keypad will beep 3 times indicating the panel default values have been loaded.
7. Remove wiring between terminal 19 (PGM) and terminal 3.
8. Re-install original wiring for terminal 19 (PGM) and terminal 3.

**Note:** Any programming in *Dealer Options 1* [96] and *Dealer Options 2* [97] will not be defaulted. If *Dealer Code Lockout* has been programmed the panel will not default the Dealer Code. The Event Log will be erased when the panel is defaulted.

### Entering Dealer Program Mode

Enter **FUNCTION** **8A**

#### Dealer Code

( ) ( ) ( ) ( )  
(4) (5) (6) (7)

Default Dealer Code shown in parentheses

	ARMED	ON	Indicates the panel is in Dealer Program Mode. The panel is ready for a programming block to be entered.
	STATUS	OFF	
	TROUBLE	FLASHING	

#### NOTE:

Entering Dealer Program Mode is not permitted while the panel is Armed, Reporting, or the Bell Output is on. To Enter Dealer Mode while the Bell is ON or the panel is Reporting or Armed; power up the panel and enter Dealer Mode within the first 3 minutes. Pressing the **RESET** key clears the 3 minute timer.

### Exiting Dealer Program Mode

Enter **RESET** **FUNCTION** **8A**

#### Dealer Code

( ) ( ) ( ) ( )  
(4) (5) (6) (7)

	ARMED	FLASHING	Indicates the panel is Ready to exit Dealer Program Mode. Enter the Dealer Code to exit.
	STATUS	FLASHING	
	TROUBLE	FLASHING	

## Types of Programming Blocks

### LED Programming Block

Enable features by pressing the key that corresponds to the associated feature; the LED will turn ON. To disable a feature press the key again; the LED will turn OFF. To disable all features within a LED Type Programming Block press the **INSTANT** key; all LEDs will turn OFF.

#### 1 LED Programming Block Example

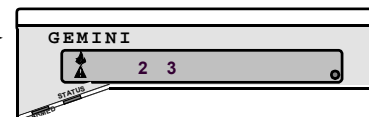
Program zones 2 and 3 as *Follower Zones*.

1. Enter Programming Block 02, by pressing **RESET** (Beep), then **0** **2** (Beep).
2. Press the **2** key to select zone 2.
3. Press the **3** key to select zone 3.

02 Exit/Entry Follower	
Default	
OFF	Zone 1
OFF	Zone 2
OFF	Zone 3
OFF	Zone 4
OFF	Zone 5
OFF	Zone 6
OFF	Zone 7
OFF	Zone 8

LED Type Programming Block

Zone 2 and Zone 3 LEDs are ON indicating that zones 2 and 3 have been programmed as follower zones.



### Direct Entry Programming Block

Enter data directly. For hexadecimal entries of A-F, use the **\*** key + **1** through **6** keys, respectively. Use the **INSTANT** key to blank out digits in Direct Entry type programming blocks. Default values are shown in parentheses.

#### 1 Direct Entry Programming Example 1

Program the panel for a 60 second *Exit Delay*.

1. Press **RESET** (Beep) **1** **0** (Beep).
2. Press **0** **6** **0**.

10 Exit Delay	
0	Exit Delay, seconds
6	
0	
(0) (4) (5) Maximum Entry 255	

Direct Entry Type Programming Blocks

#### 2 Direct Entry Programming Example 2

(Hexadecimal data entry)

Program *Telephone Prefix Number* with a 9E.

1. Press **RESET** (Beep) **4** **4** (Beep).
2. Press **9** **P**.
3. Press **\***.
4. Press **5**.

44 Dialing Prefix	
9	E

	ARMED	OFF	Indicates the panel is in Dealer Program Mode; the next digit entered will be interpreted as a Hexadecimal digit. Valid entries are 1-6 (A-F).
	STATUS	FLASHING	
	TROUBLE	FLASHING	

## Viewing Data in Programming

To view data within a programming block, press **[RESET]** and enter the Program Block Number to view the 1st digit of data. Press the **[INTERIOR]** key to view the 2nd digit and continue pressing **[INTERIOR]** until all digits within the Block have been viewed. Data will be displayed in the binary format shown in the table below:

Value	Data Displayed	Value	Data Displayed
0/Blank		8	4
1	1	9	1 4
2	2	*A/0	2 4
3	1 2	B	1 2 4
4	3	C	3 4
5	1 3	D	1 3 4
6	2 3	E	2 3 4
7	1 2 3	F	1 2 3 4

**\* NOTE:**  
In the following Programming Blocks, data that has been entered as a '0' will be displayed as an 'A':  
*Subscriber ID Numbers, Phone Numbers, Pager Leading and Trailing digits and Report Codes.*

For Technical Assistance,  
Contact the NAPCO Toll  
Free Helpline ☎  
(800) 645-9440

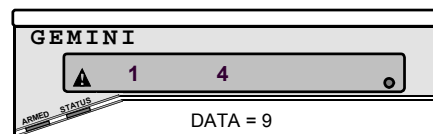
Zone #	Bit Value
1	1
2	2
3	4
4	8

### Example: Viewing the Dialing Prefix

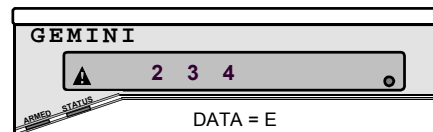
A Dialing Prefix of 9E has been programmed at Programming Block Number 44 (outside access number). Follow the steps below to view the data:

- Press **[RESET]** **4** **4** to enter Programming Block 44.  
The 1st digit of Programming Block 44 is displayed.


44 Dialing Prefix 9 E



- Press the **[INTERIOR]** key to view the 2nd digit.



**NOTE:**  
The Following Programming Options are not permitted for UL installations: [05], [06], [23-2], [26-3] and [26-4].

The  symbol by a programming Block indicates the programming option is not permitted for UL installations.

**NOTE:**  
For information about programming blocks refer to GEM-P801 Installation Manual WI1089.

## Zone Features

### 00 Exit/Entry Zones

Default

☒ Zone 1  
☐ Zone 2  
☐ Zone 3  
☐ Zone 4  
☐ Zone 5  
☐ Zone 6  
☐ Zone 7  
☐ Zone 8

### 03 Auto Bypass Reentry Zones

Default

☐ Zone 1  
☐ Zone 2  
☐ Zone 3  
☐ Zone 4  
☐ Zone 5  
☐ Zone 6  
☐ Zone 7  
☐ Zone 8

### 06 Disable EOL Resistor

Default

☐ Zone 1  
☐ Zone 2  
☐ Zone 3  
☐ Zone 4  
☐ Zone 5  
☐ Zone 6

### 09 Selective Bypass

Default

☒ Zone 1  
☐ Zone 2  
☒ Zone 3  
☒ Zone 4  
☒ Zone 5  
☒ Zone 6  
☐ Zone 7  
☒ Zone 8

### 01 Home/Away with Delay Zones

Default

☐ Zone 1  
☐ Zone 2  
☐ Zone 3  
☐ Zone 4  
☐ Zone 5  
☐ Zone 6  
☐ Zone 7  
☐ Zone 8

### 04 24 Hour Protection Zones

Default

☐ Zone 1  
☐ Zone 2  
☐ Zone 3  
☐ Zone 4  
☐ Zone 5  
☐ Zone 6  
☐ Zone 7  
☐ Zone 8

### 07 Burg (Steady) Output

Default

☒ Zone 1  
☒ Zone 2  
☒ Zone 3  
☒ Zone 4  
☒ Zone 5  
☒ Zone 6  
☒ Zone 7  
☒ Zone 8

### 02 Exit/Entry Follower Zones

Default

☐ Zone 1  
☐ Zone 2  
☐ Zone 3  
☐ Zone 4  
☐ Zone 5  
☐ Zone 6  
☐ Zone 7  
☐ Zone 8

### 05 40 ms Loop Response Zones

Default

☐ Zone 1  
☐ Zone 2  
☐ Zone 3  
☐ Zone 4  
☐ Zone 5  
☐ Zone 6

### 08 Programmable Output (PGM)

Default

☒ Zone 1  
☒ Zone 2  
☒ Zone 3  
☒ Zone 4  
☒ Zone 5  
☒ Zone 6  
☒ Zone 7  
☒ Zone 8

## System Times

### 10 Exit Delay

Exit Delay, seconds  
 (0) (4) (5) Maximum Entry 255

### 11 Entry Delay

Entry Delay, seconds  
 (0) (3) (0) Maximum Entry 255

### 12 Burg (Steady) Output Time-out

Bell Time-out, minutes  
 (0) (0) (5) Maximum Entry 255

### 13 Fire (Pulsed) Output Time-out

Bell Time-out, minutes  
 (0) (0) (0) Maximum Entry 255

### 14 Test Timer Interval

Test Timer/Line Test, days  
 (0) (0) (0) Maximum Entry 255

## System Times

### 15 Line Cut Time-to-Fail (Disabled = 000)

Line Cut Time-to-Fail, seconds  
(0) (0) (0) **Enable Feature**-Valid Entries 10-255

### 16 Wireless Supervisory Timer

Supervisory Timer, hours  
(1) (2) Maximum Entry 26  
\*See Note 4

### 17 Wireless Smoke Supervisory Timer

Smoke Supervisory Timer, hours  
(8) Maximum Entry 8

### 18 Test Timer Offset

Test Timer, hours  
(1) (2) Maximum Entry 23

### 29 Chime Time

Chime Time, 1/4 seconds  
(4) Valid Entries 2-9

## System Features

### 20 Keypad Features 1

Default  
☐ OFF ☐ Zn 1 LED ON = \*Keypad Fire ( 7F  \*)  
☐ OFF ☐ Zn 2 LED ON = \*Keypad AUX ( 8A  \*)  
☐ ON ☐ Zn 3 LED ON = \*Keypad Panic ( 9P  \*)  
☐ OFF ☐ Zn 4 LED ON = \*Ambush (8th User Code)  
\*See Note 1

### 21 Keypad Features 2

Default  
☐ ON ☐ Zn 1 LED ON = Audible panic  
☐ OFF ☐ Zn 2 LED ON = Exit/Entry with Urgency  
☐ ON ☐ Zn 3 LED ON = Display Bypass (ARMED)  
☐ OFF ☐ Zn 4 LED ON = Disable Code Entry Beeps

### 22 Miscellaneous Features 1

Default  
☐ OFF ☐ Zn 1 LED ON = Abort Delay  
☐ ON ☐ Zn 2 LED ON = Easy Arm/Easy Exit  
☐ ON ☐ Zn 3 LED ON = Swinger Shutdown  
☐ OFF ☐ Zn 4 LED ON = Bell on Line Cut (Armed)

### 23 Programmable Output (PGM) Features 1

Default  
☐ OFF ☐ Zn 1 LED ON = Audio Verification  
☒ ☐ OFF ☐ Zn 2 LED ON = \*Access Output ( FUNCTION  3 )  
☐ OFF ☐ Zn 3 LED ON = \*Follow Keypad Sounder  
☐ OFF ☐ Zn 4 LED ON = Keyfob/Keyswitch Bell  
\*See Note 2

#### NOTE 1:

Additional programming required for reporting, see Blocks [36]&[56].  
**UL Installations:** If Keypad Fire [20-1] is enabled, the keypad must be mounted within (3) three feet from the Control Panel.

#### NOTE 2:

Cannot be programmed with any other Programmable Output (PGM) Feature.

### 24 Programmable Output (PGM) Features 2

Default  
☐ OFF ☐ Zn 1 LED ON = Fire  
☐ OFF ☐ Zn 2 LED ON = AUX  
☐ OFF ☐ Zn 3 LED ON = Panic  
☐ OFF ☐ Zn 4 LED ON = Test Timer

### 25 Programmable Output (PGM) Features 3

Default  
☐ OFF ☐ Zn 1 LED ON = AC Fail  
☐ OFF ☐ Zn 2 LED ON = Low Battery  
☐ OFF ☐ Zn 3 LED ON = \*Trouble  
☐ OFF ☐ Zn 4 LED ON = Armed  
\*See Note 3

### 26 Miscellaneous Features 2

Default  
☐ OFF ☐ Zn 1 LED ON = Momentary Keyswitch  
☐ OFF ☐ Zn 2 LED ON = Reserved  
☒ ☐ OFF ☐ Zn 3 LED ON = Inhibit Fail to Communicate  
☒ ☐ OFF ☐ Zn 4 LED ON = Inhibit Low Battery Display

### 27 Miscellaneous Features 3

Default  
☐ OFF ☐ Zn 1 LED ON = Keyswitch Polarity  
☐ OFF ☐ Zn 2 LED ON = Reserved  
☐ OFF ☐ Zn 3 LED ON = Reserved  
☐ OFF ☐ Zn 4 LED ON = Reserved

#### NOTE 3:

Includes Bell Cut, Fire Trouble, Receiver Fail-to-Respond, Receiver Tamper, Receiver JAM, Transmitter Low Battery, Transmitter Supervisory Failure, Wireless Smoke Low Battery and Wireless Smoke Supervisory Failure.

#### NOTE 4:

**UL Installations:** Block 16, Wireless Supervisory Timer must be set 10 hours.

## Telephone Number 1 Programming

### 30 Subscriber ID Number

--	--	--	--	--

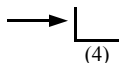
### 31 Telephone Number 1

--	--	--	--	--	--	--	--	--	--	--	--	--	--	--	--	--	--	--	--

A fixed Dial Tone Detection "E" is included by default in the *Dialing Prefix* (Block Number 44). If dial tone detection is not desired, Remove the "E" from Block 44. Program a "D" if a 4 second delay is required.

### 32 Receiver Format

- |     |                      |
|-----|----------------------|
| [0] | Disabled             |
| [1] | Ademco Slow          |
| [2] | Radionics Slow       |
| [3] | Silent Knight Fast   |
| [4] | Universal High Speed |
| [5] | Reserved             |
| [6] | Ademco Point ID      |
| [7] | Pager                |



### 33 Receiver Options

- Default
- ☒ ON ☐ Zn 1 LED ON = 2300 Hz Handshake/Kissoff
- ☐ OFF ☐ Zn 2 LED ON = Sumcheck
- ☐ OFF ☐ Zn 3 LED ON = Single Digit
- ☐ OFF ☐ Zn 4 LED ON = No Handshake

### 34 Zone Report, Telco 1

- Default
- ☒ ON ☐ Zone 1
- ☒ ON ☐ Zone 2
- ☒ ON ☐ Zone 3
- ☒ ON ☐ Zone 4
- ☒ ON ☐ Zone 5
- ☒ ON ☐ Zone 6
- ☒ ON ☐ Zone 7
- ☒ ON ☐ Zone 8

### 35 Zone Restore Report, Telco 1

- Default
- ☐ OFF ☐ Zone 1
- ☐ OFF ☐ Zone 2
- ☐ OFF ☐ Zone 3
- ☐ OFF ☐ Zone 4
- ☐ OFF ☐ Zone 5
- ☐ OFF ☐ Zone 6
- ☐ OFF ☐ Zone 7
- ☐ OFF ☐ Zone 8

### 36 System Reporting, Telco 1

- Default
- ☐ OFF ☐ Zn 1 LED ON = \*KP Fire ( ☐ 7F ☐ \* )
- ☐ OFF ☐ Zn 2 LED ON = \*KP AUX ( ☐ 8A ☐ \* ) / Ambush
- ☒ ON ☐ Zn 3 LED ON = \*KP Panic ( ☐ 9P ☐ \* )
- ☐ OFF ☐ Zn 4 LED ON = Test Timer

### 37 System Reporting, Telco 1

- Default
- ☐ OFF ☐ Zn 1 LED ON = AC Fail Report (15 min. report delay)
- ☒ ON ☐ Zn 2 LED ON = Low Battery Report
- ☐ OFF ☐ Zn 3 LED ON = \*Trouble Report
- ☒ ON ☐ Zn 4 LED ON = Fire Report
- \*See Note 2

### 38 System Restore Report, Telco 1

- Default
- ☐ OFF ☐ Zn 1 LED ON = AC Restore Report
- ☐ OFF ☐ Zn 2 LED ON = Battery Restore Report
- ☐ OFF ☐ Zn 3 LED ON = Trbi Restore Report
- ☐ OFF ☐ Zn 4 LED ON = Fire Restore Report

### 39 Opening Closing Report, Telco 1

- Default
- ☐ OFF ☐ Zn 1 LED ON = User 1 Reporting
- ☐ OFF ☐ Zn 2 LED ON = User 2 Reporting
- ☐ OFF ☐ Zn 3 LED ON = User 3 Reporting
- ☐ OFF ☐ Zn 4 LED ON = User 4 Reporting
- ☐ OFF ☐ Zn 5 LED ON = User 5 Reporting
- ☐ OFF ☐ Zn 6 LED ON = User 6 Reporting
- ☐ OFF ☐ Zn 7 LED ON = User 7 Reporting
- ☐ OFF ☐ Zn 8 LED ON = User 8 Reporting

#### NOTE 1:

Requires features to be enabled, see block [20].

#### NOTE 2:

Includes Bell Cut, Fire Trouble, Receiver Fail-to-Respond, Receiver Tamper, Receiver JAM, Transmitter Low Battery, Transmitter Supervisory Failure, Wireless Smoke Low Battery, Wireless Smoke Supervisory Failure.

ZONE 3 TX LOW BATTERY      "RF TRAN LOW BAT, ZN03"  
SMOKE 2 LOW BATTERY      "RF TRAN LOW BAT, ZN10"

## Backup Telephone Programming

### 40 Subscriber ID Number (Telco 2)

--	--	--	--	--

### 41 Telephone Number 2

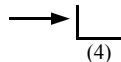
--	--	--	--	--	--	--	--	--	--	--	--	--	--	--

#### NOTE:

A fixed Dial Tone Detection "E" is included by default in the *Dialing Prefix* (Block Number 44). If dial tone detection is not desired, Remove the "E" from Block 44. Program a "D" if a 4 second delay is required.

### 42 Receiver Format

- |     |                      |
|-----|----------------------|
| [1] | Ademco Slow          |
| [2] | Radionics Slow       |
| [3] | Silent Knight Fast   |
| [4] | Universal High Speed |
| [5] | Reserved             |
| [6] | Ademco Point ID      |
| [7] | Pager                |



### 43 Receiver Options

Default

- ☒ ☐ Zn 1 LED ON = 2300 Hz Handshake/Kissoff
- ☐ ☐ Zn 2 LED ON = Sumcheck
- ☐ ☐ Zn 3 LED ON = Single Digit
- ☐ ☐ Zn 4 LED ON = No Handshake

### 44 Dialing Prefix

--	--	--	--	--

Dialing Prefix for Telco 1, Telco 2 & Telco 3.

### 45 Communicator Features 1

Default

- ☒ ☐ Zn 1 LED ON = Communicator Enabled
- ☐ ☐ Zn 2 LED ON = DTMF w/ Rotary Back up
- ☐ ☐ Zn 3 LED ON = DTMF only
- ☐ ☐ Zn 4 LED ON = Backup to Telco 2

### 46 Communicator Features 2

Default

- ☐ ☐ Zn 1 LED ON = Reserved
- ☐ ☐ Zn 2 LED ON = 2:1 Rotary Dialing
- ☐ ☐ Zn 3 LED ON = Backup if < 4 attempts
- ☒ ☐ Zn 4 LED ON = \* Don't Clear Fail to Comm.
- \*See Note 1

#### NOTE 1:

If Don't Clear Fail to Comm. is programmed, only a successful communication to Central Station will clear a Failure to Communicate system trouble.

## Pager Programming

### 47 Leading Digits

--	--	--	--	--	--	--	--	--	--	--	--	--	--	--

(0) (0) (0) (0)

--	--	--	--	--	--	--	--	--	--	--	--	--	--	--

--	--	--	--	--	--	--	--	--	--	--	--	--	--	--

### 48 Trailing Digits

--	--	--	--	--	--	--	--	--	--	--	--	--	--	--

\*(C) \*See Note 2

### 49 Pager Option

Default

- ☐ ☐ Zn 1 LED ON = Skip Alarm Data
- ☐ ☐ Zn 2 LED ON = Reserved
- ☐ ☐ Zn 3 LED ON = Reserved
- ☐ ☐ Zn 4 LED ON = Reserved

#### NOTE 2:

C = TouchTone #. This is the typical terminating digit for most paging systems. Recommended, but may not be required by paging system. D = 2 second delay.

## Telephone Number 3 Programming

### 50 Subscriber ID Number

--	--	--	--	--

### 51 Telephone Number 3

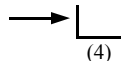
--	--	--	--	--	--	--	--	--	--	--	--	--	--	--	--	--	--

#### NOTE:

A fixed Dial Tone Detection "E" is included by default in the *Dialing Prefix* (Block Number 44). If dial tone detection is not desired, Remove the "E" from Block 44. Program a "D" if a 4 second delay is required.

### 52 Receiver Format

- [0] Disabled
- [1] Ademco Slow
- [2] Radionics Slow
- [3] Silent Knight Fast
- [4] Universal High Speed
- [5] Reserved
- [6] Ademco Point ID
- [7] Pager



### 53 Receiver Options

Default

- ☒ Zn 1 LED ON = 2300 Hz Handshake/Kissoff
- ☐ Zn 2 LED ON = Sumcheck
- ☐ Zn 3 LED ON = Single Digit
- ☐ Zn 4 LED ON = No Handshake

### 54 Zone Report, Telco 3

Default

- ☐ Zone 1
- ☐ Zone 2
- ☐ Zone 3
- ☐ Zone 4
- ☐ Zone 5
- ☐ Zone 6
- ☐ Zone 7
- ☐ Zone 8

### 55 Zone Restore Report, Telco 3

Default

- ☐ Zone 1
- ☐ Zone 2
- ☐ Zone 3
- ☐ Zone 4
- ☐ Zone 5
- ☐ Zone 6
- ☐ Zone 7
- ☐ Zone 8

### 56 System Reporting, Telco 3

Default

- ☐ Zn 1 LED ON = \*KP Fire ( ☐ 7F ☐ \* )
- ☐ Zn 2 LED ON = \*KP AUX ( ☐ 8A ☐ \* ) /Ambush
- ☐ Zn 3 LED ON = \*KP Panic ( ☐ 9P ☐ \* )
- ☐ Zn 4 LED ON = Test Timer

\*See Note 1

### 57 System Reporting, Telco 3

Default

- ☐ Zn 1 LED ON = AC Fail Report (15 min. report delay)
- ☐ Zn 2 LED ON = Low Battery Report
- ☐ Zn 3 LED ON = \*Trouble Report
- ☐ Zn 4 LED ON = Fire Report

\*See Note 2

### 58 System Restore Report, Telco 3

Default

- ☐ Zn 1 LED ON = AC Restore Report
- ☐ Zn 2 LED ON = Battery Restore Report
- ☐ Zn 3 LED ON = Trbl Restore Report
- ☐ Zn 4 LED ON = Fire Restore Report

### 59 Opening Closing Report, Telco 3

Default

- ☐ Zn 1 LED ON = User 1 Reporting
- ☐ Zn 2 LED ON = User 2 Reporting
- ☐ Zn 3 LED ON = User 3 Reporting
- ☐ Zn 4 LED ON = User 4 Reporting
- ☐ Zn 5 LED ON = User 5 Reporting
- ☐ Zn 6 LED ON = User 6 Reporting
- ☐ Zn 7 LED ON = User 7 Reporting
- ☐ Zn 8 LED ON = User 8 Reporting

#### NOTE 1:

Requires features to be enabled, see block [20].

#### NOTE 2:

Includes Bell Cut, Fire Trouble, Receiver Fail-to-Respond, Receiver Tamper, Receiver JAM, Transmitter Low Battery, Transmitter Supervisory Failure, Wireless Smoke Low Battery, Wireless Smoke Supervisory Failure.

ZONE 3 TX LOW BATTERY      "RF TRAN LOW BAT, ZN03"  
SMOKE 2 LOW BATTERY      "RF TRAN LOW BAT, ZN10"



## Report Codes

### 60 Zone Report Codes

Zone 1 Alarm Code

(3)  Zone 2 Alarm Code

(3)  Zone 3 Alarm Code

(3)  Zone 4 Alarm Code

(3)  Zone 5 Alarm Code

(3)  Zone 6 Alarm Code

(3)  Zone 7 Alarm Code

(3)  Zone 8 Alarm Code

#### NOTE:

The second digit of the Report Code is the number of the zone that is reporting. For example zone 5 report code (default of 3) would be 35.

### 61 Point ID Report Codes

Zone 1 Alarm Code

(3)  Zone 2 Alarm Code

(3)  Zone 3 Alarm Code

(3)  Zone 4 Alarm Code

(3)  Zone 5 Alarm Code

(3)  Zone 6 Alarm Code

(3)  Zone 7 Alarm Code

(3)  Zone 8 Alarm Code

- 1 FIRE
- 2 PANIC
- 3 BURGLARY
- 4 HOLDUP
- 5 GENERAL ALARM
- 6 RESERVED
- 7 GAS ALARM
- 8 HEAT ALARM
- 9 RESERVED
- A AUXILIARY
- B 24 HOUR ALARM

Note: See page 11 for complete listing of Point ID report codes.

### 62 Zone Codes

Zone 1, 2, 3, 4, 5, 6, 7 & 8 Restore Code

(E)

Zone 1, 2, 3, 4, 5, 6, 7 & 8 Trouble Code

(F)

### 63 System Report Codes

Keypad Fire ( 7F  \*)

(1) (1)

Keypad AUX ( 8A  \*)

(2) (3)

Keypad Panic ( 9P  \*)

(2) (1)

Test Timer

(F) (F)

AC Fail

(F) (9)

Low Battery

(F) (8)

\*Trouble

(F) (1)

Fire

(1) (1)

\*See Note 1

### 64 System Restore Code

(E)

#### NOTE 1:

Includes Bell Cut, Fire Trouble, Receiver Fail-to-Respond, Receiver Tamper, Receiver JAM, Transmitter Low Battery, Transmitter Supervisory Failure, Wireless Smoke Low Battery and Wireless Smoke Supervisory Failure.

### 65 Opening and Closing Code

(C) Closing Code

(B) Opening Code

### 66 Ambush Report Code

(2) (2)

## Enhanced Communicator Features

### 67 Telephone Number 1

Default

OFF  Zn 1 LED ON = Opening after Alarm (Cancel Code)

OFF  Zn 2 LED ON = Conditional Closing

OFF  Zn 3 LED ON = Reserved

OFF  Zn 4 LED ON = Reserved

### 68 Telephone Number 3

Default

OFF  Zn 1 LED ON = Opening after Alarm (Cancel Code)

OFF  Zn 2 LED ON = Conditional Closing

OFF  Zn 3 LED ON = Reserved

OFF  Zn 4 LED ON = Reserved

## Wireless

### Transmitters

71 Zone 1

						:	
--	--	--	--	--	--	---	--

Point

--

72 Zone 2

						:	
--	--	--	--	--	--	---	--

73 Zone 3

						:	
--	--	--	--	--	--	---	--

74 Zone 4

						:	
--	--	--	--	--	--	---	--

75 Zone 5

						:	
--	--	--	--	--	--	---	--

76 Zone 6

						:	
--	--	--	--	--	--	---	--

77 Zone 7

						:	
--	--	--	--	--	--	---	--

78 Zone 8

						:	
--	--	--	--	--	--	---	--

Enter the RF ID# located on the Transmitter, Key Fob and Smoke Detector labels.



Enter the point number to be associated with the zone. If only one point of GEM-TRANS2 is used, enter a 1 in this location. For GEM-GB, GEM-DT, GEM-PIR enter a 1 in this location.

### Programming Example

Map point 1 of a window door transmitter, with RF ID# 0012B0:0 to Zone 3.

73 Zone 3    0 | 0 | 1 | 2 | B | 0 | : 0    1

1. Enter Dealer Mode.
2. Enter **RESET** (beeps) **7F** **3** (beeps)
3. Enter **0** **0** **1** **2** **\*** **2** **0** **0**
4. Enter **1** (beeps)

↑  
Hexadecimal B Entry

Note: If the RF ID# in step 3 is not entered correctly the keypad will emit a 1 second tone indicating incorrect entry. Repeat steps 2 - 4 above.

### Keyfobs

81 Keyfob 1

						:	
--	--	--	--	--	--	---	--

82 Keyfob 2

						:	
--	--	--	--	--	--	---	--

83 Keyfob 3

						:	
--	--	--	--	--	--	---	--

84 Keyfob 4

						:	
--	--	--	--	--	--	---	--

RF ID #

AUX 1    AUX 2

### AUX 1 & 2 Programming

1. Panic
2. AUX
3. Bell ON
4. PGM
5. Instant
6. Access on PGM
7. Full Set System
8. Interior

### Smoke Detectors

85 Smoke 1

						:	
--	--	--	--	--	--	---	--

86 Smoke 2

						:	
--	--	--	--	--	--	---	--

87 Smoke 3

						:	
--	--	--	--	--	--	---	--

88 Smoke 4

						:	
--	--	--	--	--	--	---	--

RF ID #

### Hexadecimal Data Entry

To Enter a hexadecimal digit enter the following: A= **\*** **1**    B= **\*** **2**    C= **\*** **3**    D= **\*** **4**    E= **\*** **5**    F= **\*** **6**

## 90 Callback Telephone Number

A fixed Dial Tone Detection "E" is required if callback downloading is to be utilized. Place the "E" in the first location of Block 90, before the Callback Telephone Number. Program a "D" if a 4 second delay is required.

## 91 Ring Count

|||

(0) (9) Maximum Entry 15

## 92 Downloading Features

Default

☒ ON ☐ Zn 1 LED ON = Ring Method

☒ ON ☐ Zn 2 LED ON = Answering Machine override

**ON** **Zn 3 LED ON = Function 6** ( **FUNCTION** **6** )

☐ OFF ☐ Zn 4 LED ON = Signal Strength Test Mode

**93 Auto Download ID Number**

## 94 Dealer Code

|||

(4) (5) (6) (7)

## 95 User 1 Code

--	--	--	--	--

(1)   (2)   (3)   (4)

**96 Dealer Options 1**

Default

|OFF || |Zn 1 LED ON = Dealer Code Lockout

ON	Zn 2 LED ON = User 1 Code Lockout
----	-----------------------------------

OFF || Zn 3 LED ON = UL Household Fire

|OFF||Zn 4 LED ON = Fire Trouble on Fire LED

## 97 Dealer Options 2

Default

OFF |      | Zn 1 LED ON = \* International Dialing Protocol

| OFF || Zn 2 LED ON = \* Invert Bell Output

☐ OFF ☐ Zn 3 LED ON = System Trouble Auto Reset

☐ OFF ☐ Zn 4 LED ON = User 1 Code-Program only

\*See Note 1

## 98 Number of Re-Dials

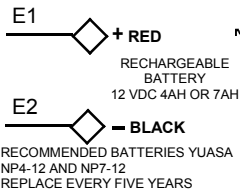
| # of communication re-dial attempts

(9)

**NOTE 1:**

International Features

Point ID Report Codes			
Zone Alarm Codes		System Codes	
1 Fire	110-000	Receiver Tamper	145-000
2 Panic	123-00X	AC Fail	301-000
3 Burglary	130-00X	Low Battery	302-000
4 Holdup	122-00X	Bell Cut	321-000
5 General Alarm	140-00X	Receiver Jam	333-000
7 Gas Alarm	151-00X	Fire Zone Trouble	373-000
8 Heat Alarm	158-00X	Transmitter Supervisory Fail	381-00X
A Auxiliary	100-00X	Wireless Smoke Sup. Fail	381-00X
B 24 Hour Aux.	150-00X	Poll Fail	382-000
Keypad Codes		Transmitter Low Battery	
Keypad Fire	110-000	Wireless Smoke Low Battery	384-00X
Keypad Panic	123-000	Conditional Open/Close	400-00X
Keypad Aux Alarm	140-000	Open/Close	401-00X
Keypad Ambush	121-000	Test Timer	602-000
		Communication Test	602-000



## GEM-P801 WIRING DIAGRAM

(REFER TO INSTALLATION INSTRUCTIONS W11089)

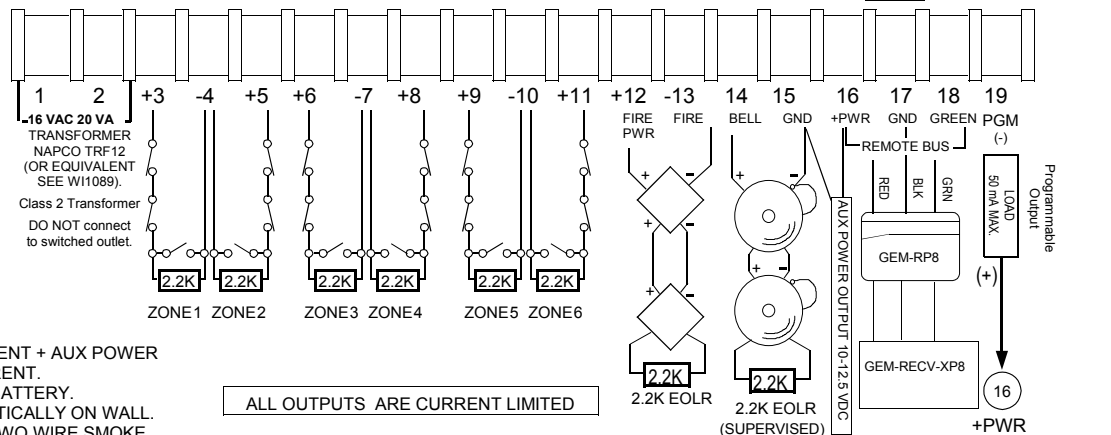
RESIDENTIAL BURG (4 HOUR STANDBY)  
COMBINED STANDBY = 500 mA BELL = 2.0 A

RESIDENTIAL FIRE (24 HOUR STANDBY) <sup>(2)</sup>  
COMBINED STANDBY = 120 mA BELL = 95 mA

COLD WATER GROUND CONNECTION  
USE ONLY COLD-WATER PIPE OR  
BURIED GROUND ROD. USE AT LEAST  
#16 AWG WIRE.



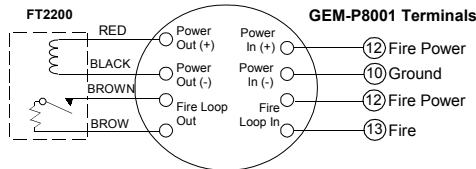
EARTH  
GROUND



- (1) COMBINED STANDBY = KEYPAD CURRENT + AUX POWER CURRENT + FIRE POWER + PGM CURRENT.
- (2) RESIDENTIAL FIRE REQUIRES A 7AH BATTERY.
- (3) UNIT INTENDED TO BE MOUNTED VERTICALLY ON WALL.
- (4) REFER TO W11089 FOR COMPATIBLE TWO WIRE SMOKE DETECTORS. DO NOT MIX DIFFERENT MODELS.
- (5) THIS PANEL SHALL BE CHECKED BY A QUALIFIED TECHNICIAN AT LEAST ONCE EVERY THREE YEARS.
- (6) THIS PANEL SUPPORTS ONLY ONE SMOKE DETECTOR IN ALARM.
- (7) USE ONLY ONE BELL IN RESIDENTIAL FIRE APPLICATION.
- (8) SYSTEM MUST BE TESTED AT LEAST ONCE A WEEK IN THE AC/BATTERY MODE AND IN THE BATTERY-ONLY MODE. (CONTACT CENTRAL STATION PRIOR TO TESTING) AC MUST BE RESTORED AFTER TEST.

ALL OUTPUTS ARE CURRENT LIMITED

### 4-Wire Fire Wiring



**WARNING**  
TO PREVENT RISK  
OF ELECTRIC SHOCK  
DISCONNECT TELEPHONE  
LINES PRIOR TO  
SERVICING

This equipment should be installed in accordance with Chapter 2 of the National Fire Alarm Code, ANSI/NFPA 72-1996 (National Fire Protection Association Batterymarch Park, Quincy MA 02269), and local codes. Information describing proper installation, operation, testing, maintenance, evacuation planning, and repair service is to be provided with this equipment. UL Listed Energy Cable is required.