

210 mm

3- Electric characters		
3.1	Supplying Voltage	24V DC 3 A
3.2	Standby Current	20mA
3.3	Turn off Current	<1mA
3.4	Output Power	30W x 2 (24v 1kHz 0dB 4 ohms)
3.5	S/N Ratio	65dB
3.6	Resolution	60dB
3.7	Working Environment	<-10°C ~ +65°C>

4- More functions for Bluetooth		
4.1	Effective BT Pairing	3 minutes
4.2	Auto-connection	Auto-connection when power on (Defaulted connected device)
4.3	BT transmission space	Over 10 meters
4.4	Set up room name	Users can set up or change the BT device names for their different rooms with Micro USB and

5- How to set up or change BT device name		
5.1	Install offered exclusive soft ware to your computer.	
5.2	Connect Micro USB to your computer before power on.	
5.3	Turn on the device, and blue light flashes.	
5.4	Press and hold the tact switch one minute till the light off.	
5.5	Computer will reminder you to install the soft ware.	
5.6	Please find the soft ware in disk C/Program	
5.7	Install ok, and double click PSTool.	
5.8	Choose USB in changing soft ware interface, and the port will display found BT device.	
5.9	On the left of interface, there is "Location ...", and on the right of interface there will be existing BT device name.	
5.10	Set up or change to your favourite room name, click "SET", turn off and re-power on the device.	

Tips:

1. Available adapter specs: 110~240V AC input, 24V DC output, 3A, UL approved, DC female standard Φ2.1mm. If using two JA-BT-VC'S , 5A adapter suggested.
2. Please check your polarity again before your wire connection, that can't be reversed.
3. Bluetooth emitting space: At least 30 feet without obstacles.

JA-BT-VC

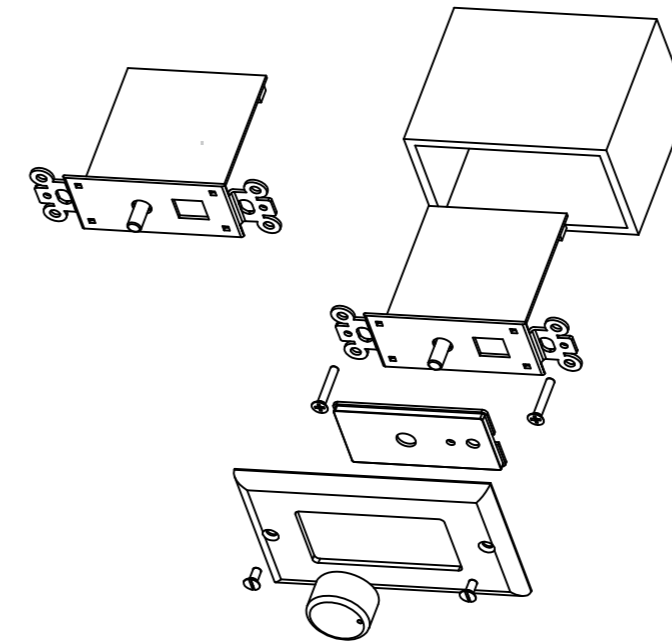
Thank you for purchasing this advanced Bluetooth Stereo Volume Control with Class D Amplifier: JA-BT-VC. It can replace traditional volume controls to give independent zone control or use as a stand alone amplifier solution for hard to wire locations. With convenient installation into a standard electrical box, you'll get high performance from a small device and hidden simplification.

All you need is this JA-BT-VC Volume Control and a set of speakers, either inwall or bookshelf style from installed wall plates. Amplify your smart phone's apps like Pandora, Spotify, Native Music, Youtube videos, Amazon Videos, Netflix and more. Turn your room into a mini-Theater.

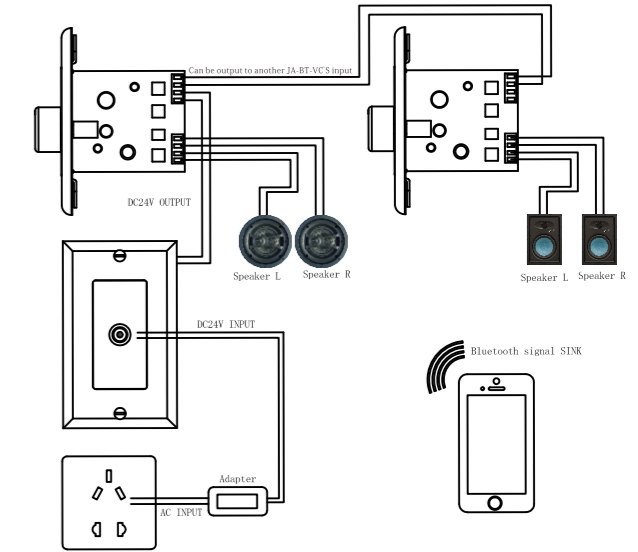
This Bluetooth volume control with amplifier, a complete new product for 2.0 stereo system, that has the traditional volume control functions with Bluetooth/analog, transmission and amplifier.

- 1- It can be installed to replace a traditional volume control;
- 2- Everyone, with Bluetooth transmission devices or 3.5 analog jack, can play their favorite music independently of other rooms.
- 3- It is suitable for home, hotel, suntan salons, massage treatment rooms or anywhere that you would like an independent room with music. This is a stand alone Bluetooth and amplifiers built in. The device is intended to be for single room operation for individual music tastes.

- 4- More convenient, easier, quicker installation than traditional volume controls, and there is no need to redistribute the audio wires inside the ceiling or wall. Existing 16 gauge speaker wire may be used.
- 5- Multi-color face plate available to match most other standard wallplate colors. White, Ivory and Almond included at no extra charge.
- 6- When installing it is possible to customize the Bluetooth name.
- 7- UL approved AC-DC power cord needed. 24V 3Amp minimum for rated power output, NOT INCLUDED.
- 8- Safe inner-wall DC power design.
- 9- Easy and entire 2.0 sound system, dispensable for an extra amplifier.
- 10- Bluetooth 4.1 version, music play (speed) can be synchronized with movie when you play movie with your smart phone.
- 11 - Use for listening to iPhone, iPad, Droid, Handheld movies on in room speakers.



Please see your JA-BT-VC integrated distribution below:



JA-BT-VC function introduction and operation:

Function Introduction	
Main Parts	2-Channel Bluetooth Stereo amplifier
Amp main IC	TPA3118D2
Bluetooth	CSR8630
BT version	Bluetooth 4.1
Support Agreement	A2DP/AVRCP

1- Turn ON/OFF & Volume		
No.	Function	Operation
1.1	Turn On	Clockwise turn on with sound of "Click"
1.2	Turn Off	Counter-clockwise turn off with sound of "Click"
1.3	Pairing	Auto-pairing without 3.5 analog jack input
1.4	Vol+	Clockwise turn volume knob
1.5	Vol-	counter-clockwise turn volume knob

2- Light flash		
No.	Function	Operation
2.1	When turned on	Blue light flash twice and keep standing blue
2.2	When turned off	Light off
2.3	BT to be Paired	standing blue light
2.4	BT Unpaired	standing blue light
2.5	BT Paired	standing blue light
2.6	Play BT	standing blue light
2.7	Aux in	Standing red light, no blue light

140 mm