

Category 6 Jacks

20-3426 Series Cat 6



DataComm Electronics, Inc.
888.223.7977 / 770.662.8205 / www.datacommelectronics.com

DataComm Electronics' new, high performance Cat 6 jacks feature a 180° configuration for rear termination. These jacks are designed to work with DataComm Electronics' keystone wallplates and surface mount boxes.



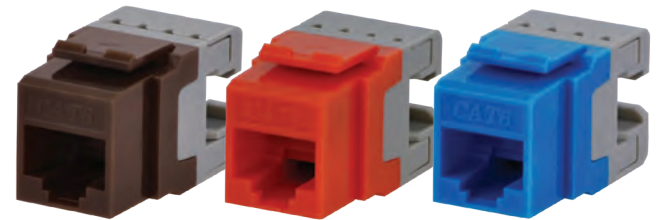
Black

Gray

White

FEATURES & SPECIFICATIONS:

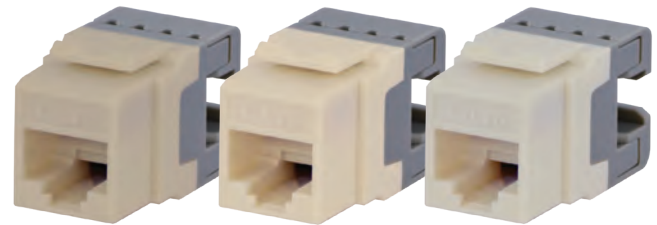
- Dual wiring code label allows connector to be wired to either T568A or T568B
- Available in 9 colors
- 180° configuration for rear termination
- 110-type insulation displacement connectors (IDC)
- High-performance data transmission supported for applications up to 250 MHz
- UL listed
- Complies with all TIA/EIA-568 requirements
- Meets FCC Part 68 requirements
- 20-year product warranty



Brown

Orange

Blue



Ivory

Almond

Lite Almond

25-YEAR CHANNEL SYSTEM WARRANTY

When using DataComm Patch Panels, Patch Cords, and Cat 6 Jacks with Honeywell Genesis Cat 6 Cable (numbers 5092 and 5102).

Part #	Description	Color
20-3426-AL	Cat 6 Jack	Almond
20-3426-BK	Cat 6 Jack	Black
20-3426-BL	Cat 6 Jack	Blue
20-3426-BR	Cat 6 Jack	Brown
20-3426-GY	Cat 6 Jack	Gray
20-3426-IV	Cat 6 Jack	Ivory
20-3426-LA	Cat 6 Jack	Lite Almond
20-3426-OR	Cat 6 Jack	Orange
20-3426-WH	Cat 6 Jack	White

PART #	MATERIAL
COVER	ABS UL940V0
IDC	PLASTIC: PC PIN: PHOSPHOR BRONZE PLATED WITH NICKEL
PIN	PHOSPHOR BRONZE PLATED WITH GOLD 50U
PCB	UL 94V0
IDC CAP	PC



RoHS Compliant

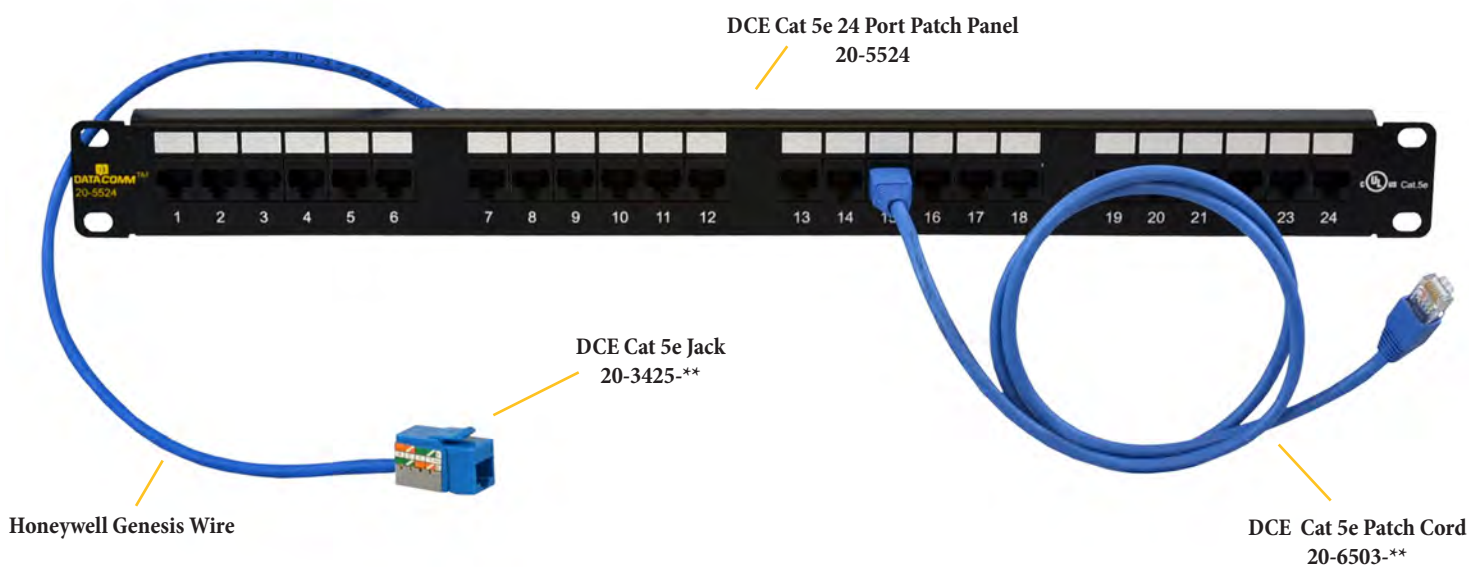
25-Year Channel System Warranty Program with Honeywell Genesis Cable



DataComm Electronics, Inc.
888.223.7977 / 770.662.8205 / www.DataCommElectronics.com



DataComm Electronics, in conjunction with Honeywell Genesis, announce our Category 5e and Category 6 *25-Year Channel System Warranty*. Ask your DataComm Electronics or Honeywell Genesis Cable Distributor for more details.



DataComm Electronics Warranty Product Numbers:

Cat 5e Jack: Series 20-3425-**: AL, BK, BL, BR, GY, IV, LA, OR, RD, WH, YW

Cat 5e Patch Panels: 20-5502, 20-5512, 20-5524 and 20-5548

Cat 5e Patch Cords:

1 ft: 20-6501-BL, WH	15 ft: 20-6515-BL, WH
3 ft: 20-6503-BL, WH	25 ft: 20-6525-BL, WH
7 ft: 20-6507-BL, WH	50 ft: 20-6550-BL, WH

Cat 6 Jack : Series 20-3426-**: AL, BK, BL, BR, GY, IV, LA, OR, WH

Cat 6 Patch Panels: 20-5602, 20-5612, 20-5624 and 20-5648

Cat 6 Patch Cords:

1 ft: 20-6601-BL, WH	15 ft: 20-6615-BL, WH
3 ft: 20-6603-BL, WH	25 ft: 20-6625-BL, WH
7 ft: 20-6607-BL, WH	50 ft: 20-6650-BL, WH

High Performance Cat 6 Jack (20-3426-**)



Data Transmission up to 250 MHz

Qualifying Honeywell Genesis Part Numbers:

Cat 5e Cable: 5078, 5088, 5090

Cat 6 Cable: 5092, 5102