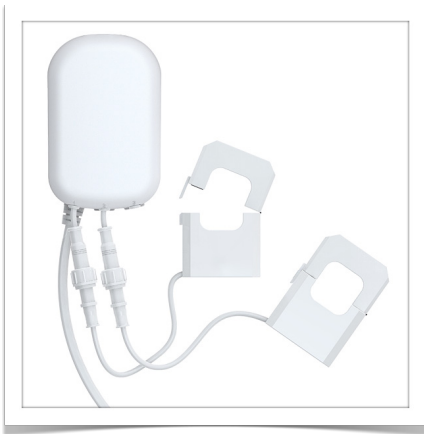




AEON LABS HOME ENERGY METER

Z-Wave Whole Home Energy Meter

2nd Edition



The 2nd edition of the Aeon Labs Home Energy Meter is a low-cost energy meter for the entire home. It can wirelessly report immediate wattage and kWh usage to central Z-Wave control point gateways and can be easily and safely installed by licensed professionals.

Current transformer clamps affix around the AC Mains to detect energy usage for the entire house. The Home Energy Meter is powered via DC (USB port). Electrical readings can be taken up to every second.

The main body is International Protection Code rated IP43 to be weatherized for outdoor conditions; it can operate in most weather conditions. This provides for better radio range by bringing the antenna outside of most metallic current breaker boxes.

Product highlights.

- Low-cost whole home energy meter (Wattage and kWh)
- Second generation: More accurate. Power factoring.
- Supports Z-Wave Explorer Frames. Repeats Z-Wave messages.
- Can be easily and safely installed by licensed electricians
- IP43 rated to withstand most weather conditions outdoors
- Firmware updatable in field by end-user
- Supports Z-Wave Explorer Frames. Repeats Z-Wave messages.
- Optimized antenna range: 80+ feet
- Certified/Available for USA, EU and Australian markets (FCC, CE, C-TICK, ROHS)

Technical specifications.

- Powered by 90-260VAC, 50/60Hz
- Product: 100.6x65.0x37.3mm
- Packaging: up to 242x212x68mm