

Side-by-side Comparison Between End User and Dealer PC Access 3.0.

End User PC Access

Dealer PC Access

These settings are available on both...

#	Code Name Description	Voices	Code	Authority	When On	When Off
01	CODE 1		1111	Master	12:00 AM MTWTFSS	NEVER

...but these are available only on the Dealer version.

Card #	Card Enabled	Valid Readers	Log Card	Card Arm / Disarm	DCM Open	DCM Close
000 00000	Yes	12345678 90123456	Yes	Yes	41	61

Both...

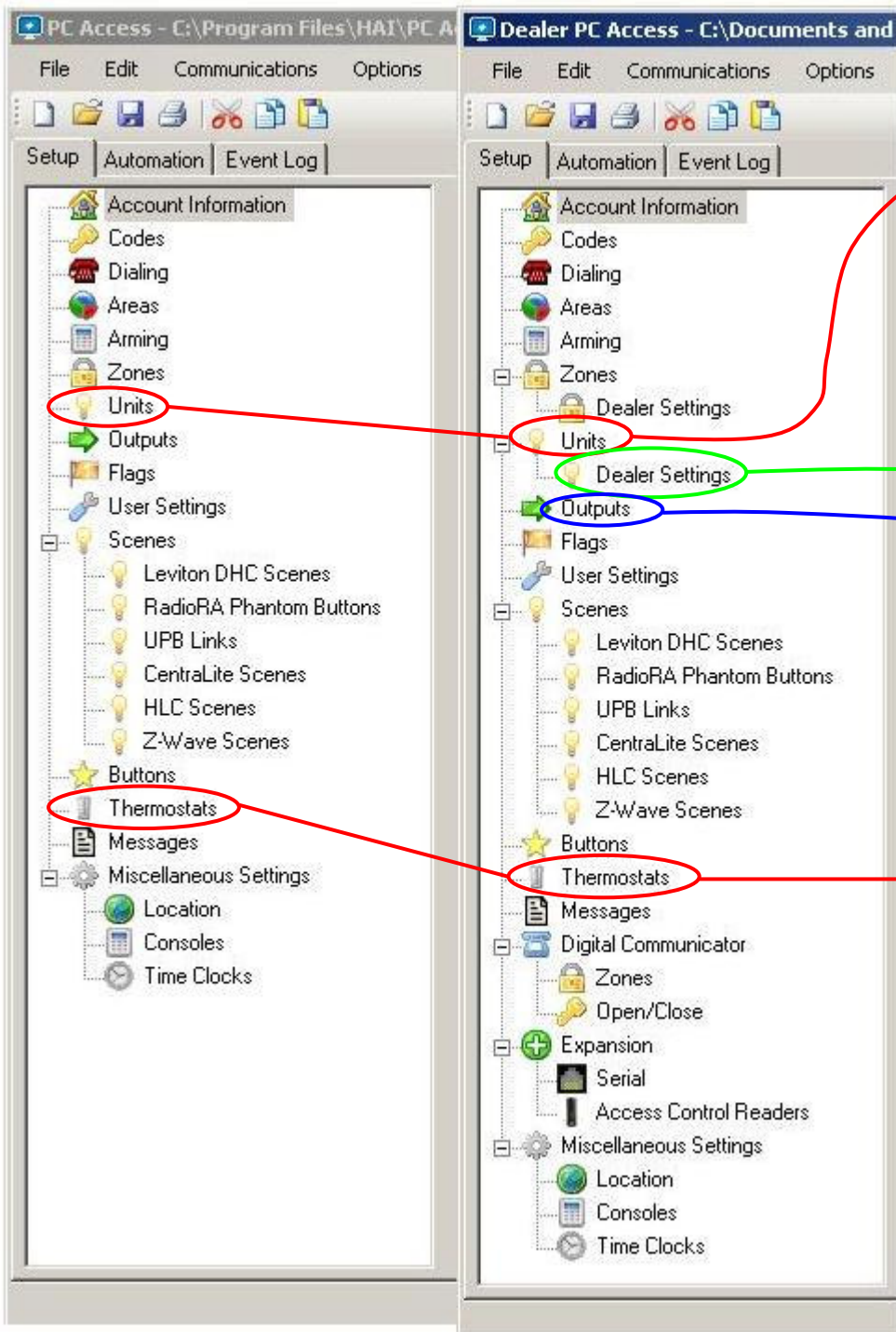
#	Annotation	Zone Name Description	Voices
001	Z1	ZONE 1	

...Dealer only.

Zone Type	Cross Zoning	Swinger Shutdown	Dial Out Delay	DCM Code
Auxiliary	Disabled	Disabled	Enabled	01

...Dealer only.

Setting	Value
Zone Resistors	Yes
Expansion Enclosures	0
Cross Zone Timer	60
Swinger Shutdown	1



Both...

#	Annotation	Unit Name Description	Voices	House Code Format
001	(RM1)	UNIT 1		HAI Lighting Control (HLC)

...Dealer only.

Enable All On	Enable All Off	Address/Node ID
Yes	Yes	n/a

Dealer only.

Setting	Value
House Code	A
X-10 3-Phase	No
UPB Network Address	1
UPB Network Password	1234
UPB Status Time	5
UPB Transmit Count	2
Expansion Enclosures	0

Both... **Dealer only.**

#	Annotation	Unit Name Description	Voices	Unit Type
385	(OUT1)	UNIT 385	<None>	General purpose

Both... **Dealer only.**

#	Thermostat Name Description	Voices	Type	Z-Wave Node ID
001	TSTAT 1	<None>	Not Used	

PC Access - C:\Program Files\HAI\PC A

File Edit Communications Options

Setup Automation Event Log

- Account Information
 - Codes
 - Dialing
 - Areas
 - Arming
 - Zones
 - Units
 - Outputs
 - Flags
 - User Settings
 - Scenes
 - Leviton DHC Scenes
 - RadioRA Phantom Buttons
 - UPB Links
- Thermostats
- Messages
- Miscellaneous Settings
- Location

#	Annotation	Zone Name Description	DCM Code
001	Z1	ZONE 1	01

#	Code Name Description	DCM Open	DCM Close
01	CODE 1	41	61

#	Module	Function
001	Module 1	Access Control

Dealer PC Access - C:\Documents and

File Edit Communications Options

Setup Automation Event Log

- Account Information
 - Codes
 - Dialing
 - Areas
 - Arming
 - Zones
 - Units
 - Dealer Settings
 - Outputs
 - Flags
 - User Settings
 - Scenes
 - Leviton DHC Scenes
 - RadioRA Phantom Buttons
 - UPB Links
 - CentraLite Scenes
 - HLC Scenes
 - Z-Wave Scenes
 - Buttons
 - Thermostats
 - Messages
 - Digital Communicator
 - Zones
 - Open/Close
 - Expansion
 - Serial
 - Access Control Readers
 - Miscellaneous Settings
 - Location
 - Consoles
 - Time Clocks

Digital Communicator and Expansion are only available through the Dealer version.

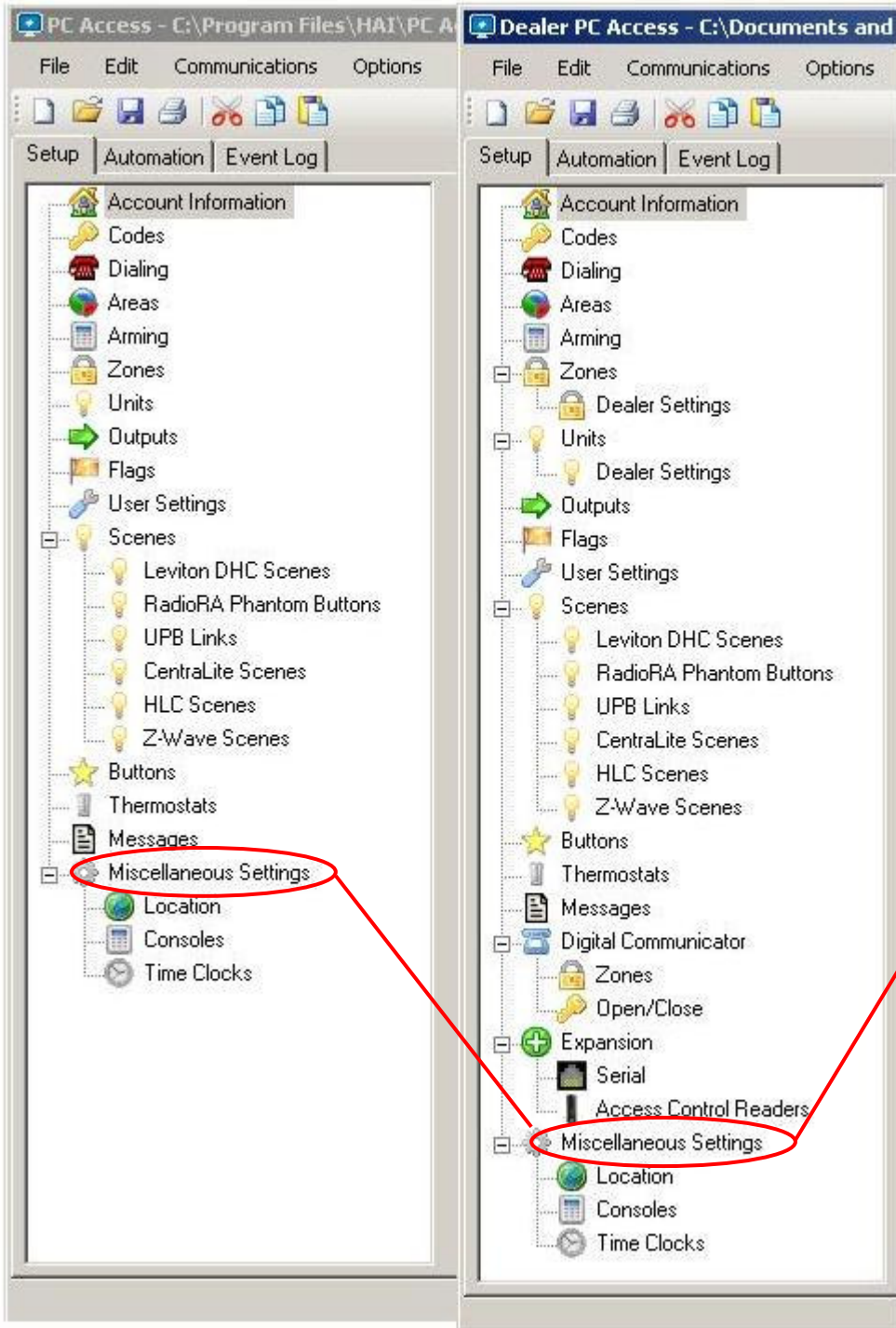
Setting	Value
Phone Number 1	-
Account 1	0000
Phone Number 2	-
Account 2	0000
DCM Type	Contact ID
Two-Way Audio	No
Test Time	NEVER
Freeze Alarm Code	81
Fire Emergency Code	82
Police Emergency Code	83
Auxiliary Emergency Code	84
Duress Alarm Code	85
Battery Low Code	86
Fire Zone Trouble Code	87
Report Bypass/Restore	Yes
Test Code	98
Cancel Code	99
Report Open/Close	No
AC Fail Report Time	60

Serial Address: 0

#	Port	Rate	Function
01	Serial 1	9600	Access Control
02	Serial 2	9600	Omni-Link
03	Serial 3	9600	UPB
04	Serial 4	9600	Omni-Link
05	Serial 5	9600	Omni-Link
06	Serial 6	9600	n/a

#	Reader Name Description	Voices	Address	Linked To	Unlock Time
01	READER 1	...	000.000.000.000	<None>	5 SECONDS

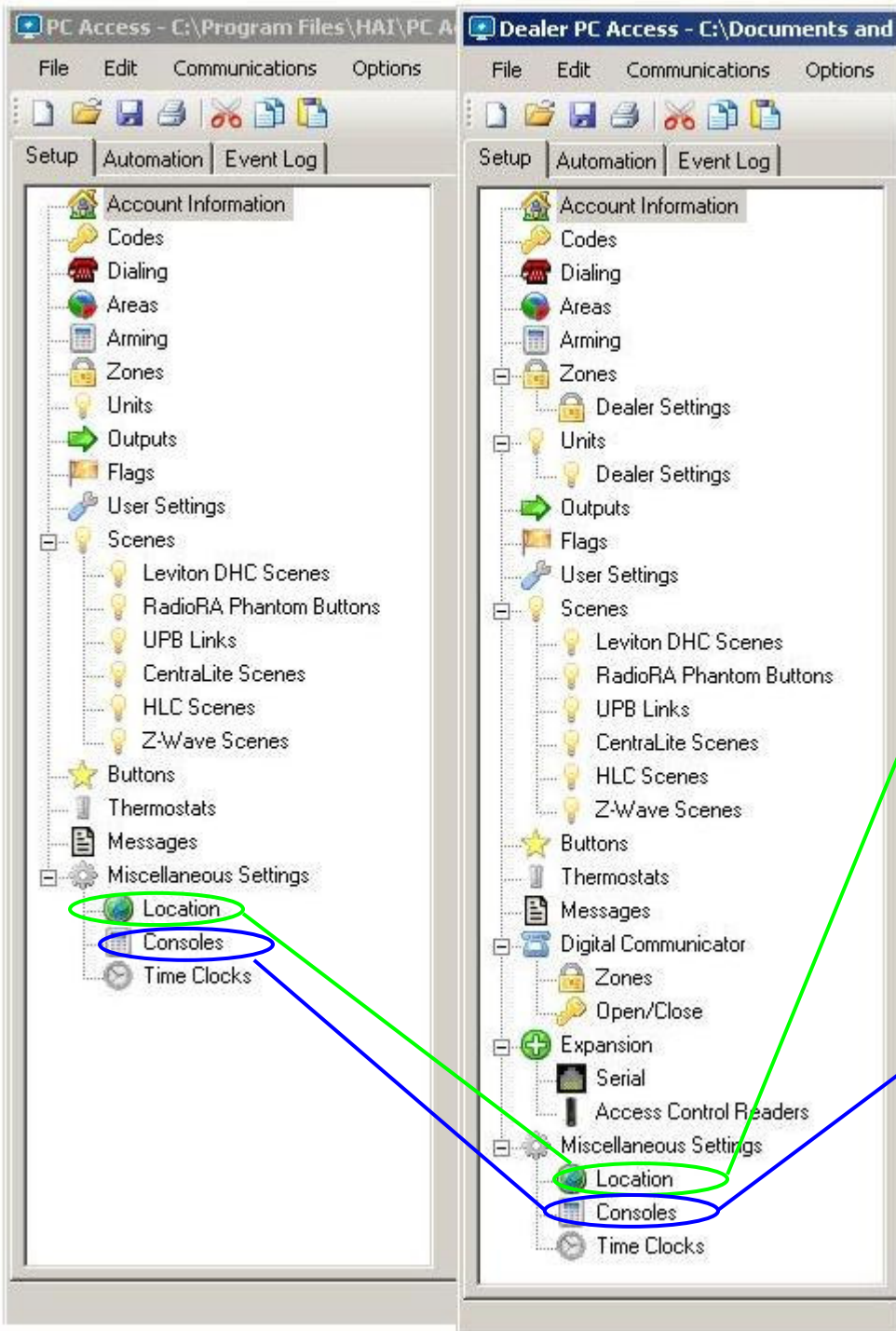
Exit Time	Lock Type	Beep On Read	Can Arm / Disarm
5 SECONDS	Fail Secure	Yes	Yes





Both...

Dealer only.

Setting	Value
High Security	No
Freeze Alarm	No
Announce Alarms	No
Flash for Alarm	2
Installer Code	1111
Enable PC Access	Yes
PC Access Code	0000
Callback Number	-
Out Siren Delay (seconds)	15
Dial Out Delay (seconds)	30
Alarm Reset (minutes)	6
Arming Confirmation	No
Verify Fire Alarms	Yes
Enable Emergency Keys	Yes
Dead Line Detect	8
Off Hook Detect	69
Pickup After Hangup	Yes
Clock Adjust	30
Supervise Interior Sounder	No
Supervise Exterior Sounder	No



Launch Zip Code/Postal Code Location Wizard:  

Setting	Value
Latitude	30
Latitude Hemisphere	North
Longitude	90
Longitude Hemisphere	West
Time Zone	6
Time Zone Hemisphere	West
Daylight Saving Time Start Month	March
Daylight Saving Time Start Week	Second Sunday
Daylight Saving Time End Month	November
Daylight Saving Time End Week	First Sunday
Time Format	am/pm
Date Format	mmdd
AC Power Frequency	60 hz
Temperature Format	Fahrenheit

Both...

Dealer only.

Both...

Dealer only.

#	Console Name Description	Enable Audible Exit Delay	Global
001	CONSOLE 1	Yes	Yes