

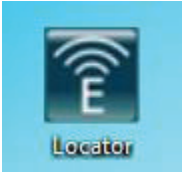
# ETHERNET TO WIFI ADAPTER INSTRUCTIONS

FGD-0250

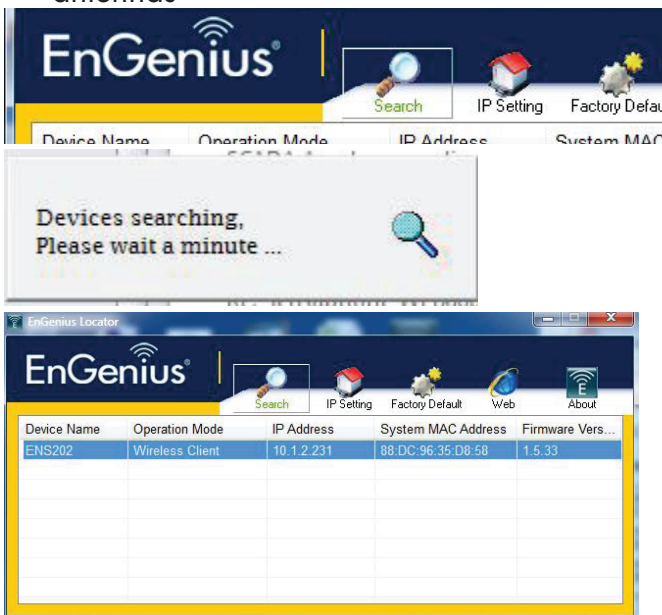
## INSTALLATION INSTRUCTIONS

1. Visit [www.sensaphone.com/wifi-software](http://www.sensaphone.com/wifi-software), download and install the file: *EnGenius WiFi Locator & Configuration Software*

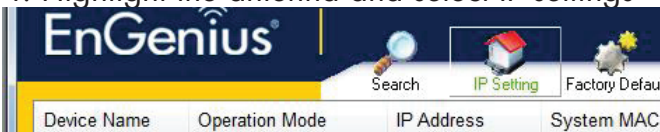
2. Click on the locator ICON



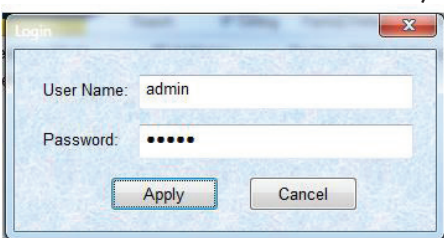
3. Click the *Search* button to find all available wifi antennas



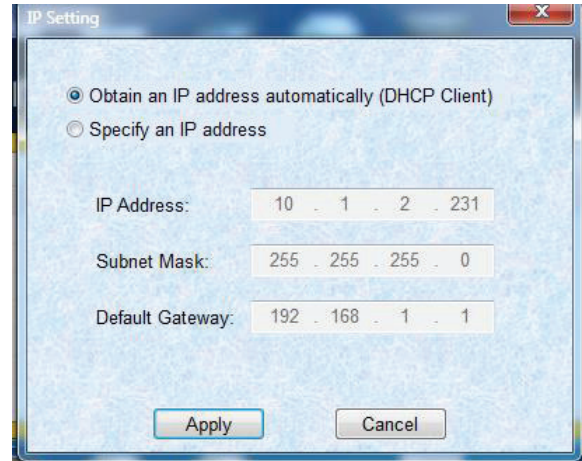
4. Highlight the antenna and select IP settings



5. You will be prompted for a username and password. The default is admin/admin



6. Obtain either an IP address automatically using DHCP or enter a static IP address. Click *Apply* when done.



7. Click the *Web* button to open the Antenna's internal webpage.



8. You will be prompted for a username and password. The default is admin/admin



9. Click *Operating Mode* and select *Client Bridge*

