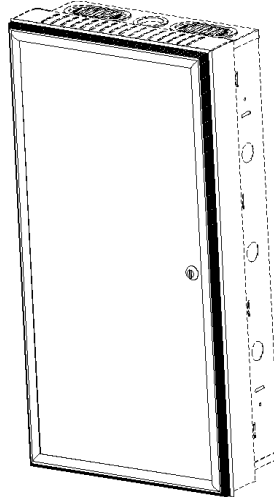




OnQ Technologies, Inc.  
P.O. Box 60907  
Harrisburg, PA 17106-0907  
800-321-2343  
www.onqtech.com

**Installation/Instruction Sheet**  
**OnQ Custom Door**  
**IS-0213 Rev O**



**Figure 1**

**1. Introduction:**

The OnQ Custom Door is an attractive option to enhance the appearance of the OnQ Service Center. Custom doors are available for OnQ 28" and 42" enclosures. The OnQ Custom Cover is available in variety of frame finishes and insert colors. The Custom Door can be mounted directly to an OnQ Custom Enclosure, OnQ Premium Enclosure, or the OnQ Enclosure Extender. The door can be mounted on the left or right hand opening on the Custom Enclosures and extenders. However, the door only mounts on left side of OnQ's premium enclosures.

The 28-inch Custom Door is part number 364593-xy, the 42 inch Custom Door is part number 364594-xy.

**Note: The part number suffix "-xy" varies based on ordering options, see description.**

**2. Description:**

The Custom Door is an aluminum frame with an insert. The frame is available in two finishes, brushed aluminum (part number suffix "-1y") and white (part number suffix "-2y"). Available inserts are, clear (part number suffix "-x1"), rose (part number suffix "-x2"), white (part number suffix "-x3"), and smoke (part number suffix "-x4"). The doors all include an installed lock. The Custom door comes preassembled with a mounting kit. Doors ship with a protective cover over the inserts.

**3. Installation:**

- A. Select right or left hand opening.
- B. Partially install a screw and lock washer into the top-mounting hole on the enclosure or extender.  
Note: Hinge brackets on doors have keyholes for hanging on either side of enclosure.
- C. Align and hang the door on the hole by slipping the top hinge keyhole over the screw. See figure 2.
- D. Align the door and install remaining screws. Tighten all screws.
- E. Remove insert protective cover by peeling back paper film on both sides of insert.

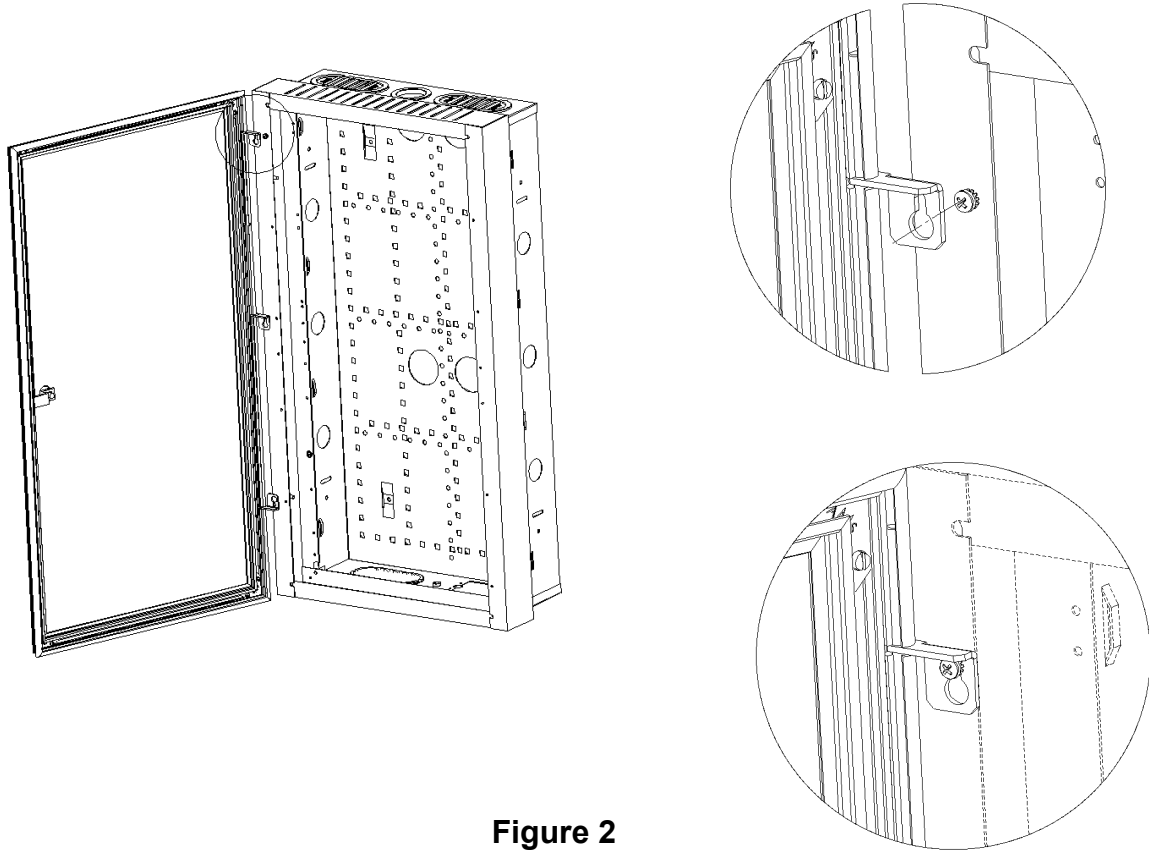
**Note: It is advisable to leave the protective cover on until construction is complete.**



OnQ Technologies, Inc.  
P.O. Box 60907  
Harrisburg, PA 17106-0907  
800-321-2343  
www.onqtech.com

**Installation/Instruction Sheet**  
**OnQ Custom Door**  
**IS-0213 Rev O**

**Note: Acrylic inserts are soft plastic. Use mild plastic cleaner and soft cloth. Many glass cleaners contain abrasives, which will scratch and dull the finish.**



**Figure 2**