

Weather Resistant 3-Way Switch

Cat. No. W5603
Rated: 15A-120/277V AC

LEVITON®

WARNINGS:

- **TO AVOID FIRE, SHOCK OR DEATH: TURN OFF POWER AT CIRCUIT BREAKER OR FUSE AND TEST THAT THE POWER IS OFF BEFORE WIRING!**
- To be installed and/or used in accordance with electrical codes and regulations.
- If you are not sure about any part of these instructions, consult an electrician.

CAUTIONS:

- To avoid damage to the product, **DO NOT** use disinfecting products, including foggers, sprays or other types of atomized cleaning agents.
- **DO NOT** spray liquid onto the product.
- To clean, use a damp cloth with mild soap.
- Use this device **WITH COPPER OR COPPER-CLAD WIRE ONLY**.

DI-000-W5603-20A

INSTALLATION INSTRUCTIONS

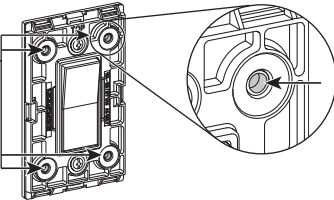
ENGLISH

Product Description

The Weather Resistant 3-Way Switch is a self-contained switch for use in a standard, single-gang, FS or FD weatherproof box. In addition, the Weather Resistant 3-Way Switch can be used with another weather-resistant 3-way switch or a wired switch companion.

NOTES:

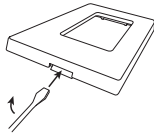
- Install this switch over smooth, flat surfaces (metal or vinyl siding, clapboard, or plywood). If the mounting surface is not smooth, use silicone sealant to ensure a proper seal.
- Mount the device in a in single-gang box **ONLY**.
- Only use the six provided mounting screws.
- When using a standard single-gang wallbox, mount the device in the two center screw locations and with two of the provided screws. Tighten the screws with 14-16 in.-lb of torque.
- When using an FS or FD weatherproof box, mount the device in the two center screw locations and the additional four screw locations with the six provided screws. Tighten the screws with 14-16 in.-lb of torque.
- Use a punch or 9/64 in. drill bit to remove extra material in additional four screw mount locations.



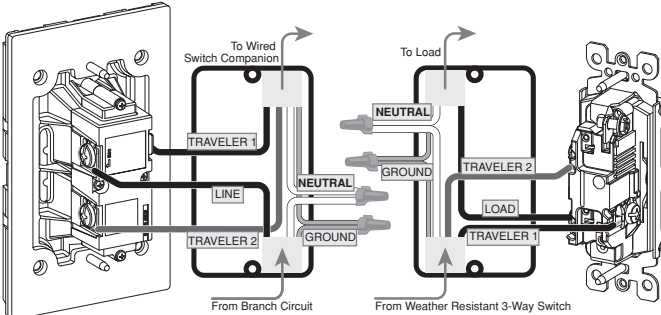
Installation

1. Remove wallplate.

Insert a flat-head screwdriver into the notch at the bottom of the wallplate to remove it.



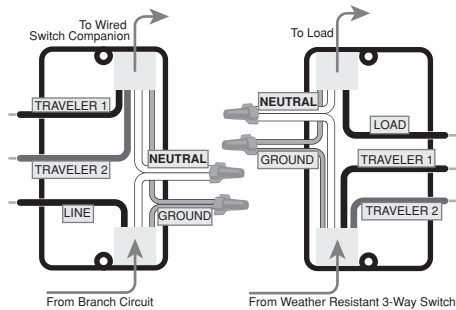
2. Identify your wires (most common):



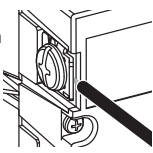
3. Wire.

Work on one connection at a time, and connect wires, as shown below.

Weather Resistant 3-Way Wallbox Wired Switch Companion Wallbox

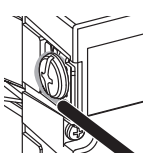


To Back Wire: Remove insulation per strip gauge on device approximately 5/8 in. (1.6 cm). Insert straight wires under clamps of appropriate terminal screws. Tighten with 14-18 in.-lb of torque.



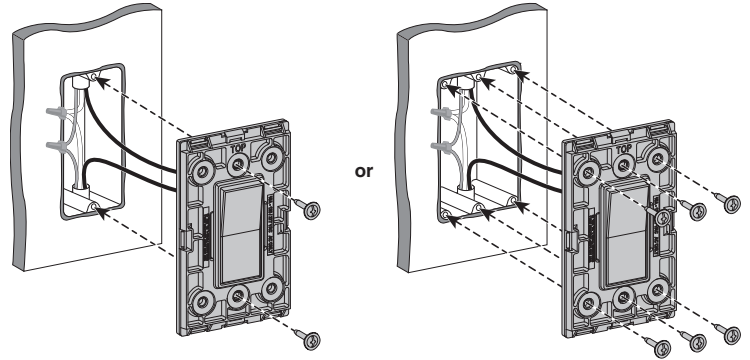
NOTE: Back wire terminal screws accept up to #10-14 AWG copper or copper-clad wire.

To Side Wire: Remove insulation approximately 3/4 in. (1.9 cm) per strip gauge on device. Loop wires clockwise 3/4 around terminal screws. Tighten with 14-18 in.-lb of torque.



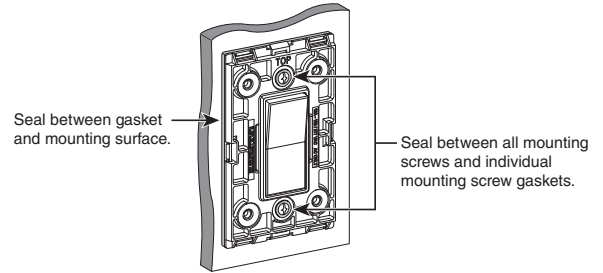
NOTE: Side wire terminal screws accept up to #12-14 AWG copper or copper-clad wire.

4. Mount.



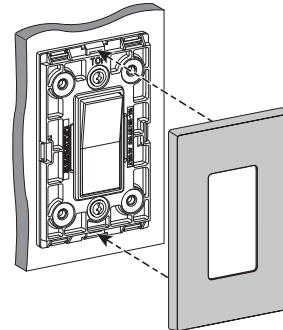
5. Tighten mounting screws.

Tighten screws with 14-16 in.-lb of torque to ensure a proper seal.



6. Install wallplate.

Make sure the notch is on the bottom of the wallplate.



7. Restore power.

Restore power at circuit breaker or fuse. Installation is complete.

Patents covering this product, if any, can be found on www.leviton.com/patents.

FOR CANADA ONLY

For warranty information and/or product returns, residents of Canada should contact Leviton in writing at Leviton Manufacturing of Canada ULC to the attention of the Quality Assurance Department, 165 Hymus Blvd, Pointe-Claire (Quebec), Canada H9R 1E9 or by telephone at 1-800-405-5320.

LIMITED 2 YEAR WARRANTY AND EXCLUSIONS

Leviton warrants to the original consumer purchaser and not for the benefit of anyone else that this product at the time of its sale by Leviton is free of defects in materials and workmanship under normal and proper use for two years from the purchase date. Leviton's only obligation is to correct such defects by repair or replacement, at its option. For details visit www.leviton.com or call 1-800-824-3005. This warranty excludes and there is disclaimed liability for labor for removal of this product or reinstallation. This warranty is void if this product is installed improperly or in an improper environment, overloaded, misused, opened, abused, or altered in any manner, or is not used under normal operating conditions or not in accordance with any labels or instructions. **There are no other or implied warranties of any kind, including merchantability and fitness for a particular purpose, but if any implied warranty is required by the applicable jurisdiction, the duration of any such implied warranty, including merchantability and fitness for a particular purpose, is limited to two years. Leviton is not liable for incidental, indirect, special, or consequential damages, including without limitation, damage to, or loss of use of, any equipment, lost sales or profits or delay or failure to perform this warranty obligation.** The remedies provided herein are the exclusive remedies under this warranty, whether based on contract, tort or otherwise.

For Technical Assistance Call: 1-800-824-3005 (USA Only) or 1-800-405-5320 (Canada Only) www.leviton.com

VERSION

